

**PONSSE**



**SERVICE  
CATALOGUE  
2023**





## ALWAYS READY TO HELP

Ponsse's global authorised service network helps forest machine entrepreneurs, forest industry companies and operators keep their machines operational and their logging profitable. Quality spare parts and forest machine accessories combined with fast expert service ensure every challenge is met with the right solution.

Our product range is continuously expanding and updating. The PONSSE Parts Online service is the number one place to find and order spare parts. The service shows the real-time prices and availability of the spare parts, and you can collect your order hassle-free from the PONSSE service centre of your choice. The service also includes spare parts manuals and Instruction Manuals for PONSSE machines and plenty of other useful information.

PONSSE products are carefully selected and meet high quality requirements. Contact our skilled salespeople for more information about our products and their suitability or visit your nearest service centre to find the newest products added to our ever-expanding product range that may not yet be included in the catalogue.

We are continuously developing our service business network in order to serve our growing customer and machine base as effectively as possible. Our expert staff are always ready to make sure your machines run properly in all conditions.

Best regards,  
PONSSE services

## TABLE OF CONTENTS

PONSSE Manager .....	6
PONSSE Parts Online .....	7
Operator training .....	8
PONSSE Active Care .....	10
PONSSE Active Care+ .....	12
Documents .....	14
Maintenance network .....	15
PONSSE Original parts .....	16
PONSSE Remanufactured parts .....	18
PONSSE Budget parts .....	20
Base machine parts .....	23
Wheels, chains and tracks .....	39
Harvester parts .....	57
Crane and loader parts .....	69
Accessories .....	77
Chemicals .....	91
Spare part sets .....	103



A logger's best friend

### PONSSE PLC

Ponssentie 22  
FI-74200 Vieremä, Finland  
Tel. +358 20 768 800  
www.ponsse.com







# ***SUSTAINABLE SOLUTIONS FOR THE BENEFIT OF OUR CUSTOMERS AND THE ENVIRONMENT***

## **PRODUCTIVE HARVESTING BEARING THE ENVIRONMENT IN MIND**

For decades, Ponsse has developed environmentally friendly and efficient Cut to length forest machines, with the best experts in the field – our customers.

The world's best machines and the aftersales services are the most effective, versatile, and reliable solution for all harvesting professionals. The robust combination enables both productive and sustainable forestry around the world.



## EFFICIENCY, PRODUCTIVITY AND INFORMATION

# PONSSE MANAGER

PONSSE Manager is an operations management system for forest machine entrepreneurs. PONSSE Manager was originally designed to provide entrepreneurs with more valuable information about their machines. PONSSE Manager keeps entrepreneurs up to date with factors that have an impact on the profitability of their machines. As a result, they can improve the efficiency of their operations.



### MACHINE CONTROL

The right machine in the right place at the right time. Monitor the progress of stands by comparing the estimated timber volume with the cut timber volume. With the map and progress of stands views, the entrepreneur can plan the move to the next stands.

### REAL-TIME MANAGEMENT OF PRODUCTIVITY

The Fleet Management feature included in PONSSE Manager displays the condition and the production volume of the machines by stand in real time. The application displays the cut total volume, breakdown of timber grades and average size of trees for each ongoing stand.

### REMOTE MANAGEMENT

The features of PONSSE Manager support the operator's work. The application informs the entrepreneur in real time what is happening with the machine, so the operator can focus on the actual work. If necessary, the application allows the data system of the forest machine to be contacted with a press of a button.



### INSTRUCTIVE PONSSE ECO DRIVE

The PONSSE Eco Drive feature makes it possible to monitor productivity and work phases of an individual machine in detail. It also enables momentary productivity to be compared with the total productivity of the shift. Work phase-specific indicators make it possible to develop working methods to be more productive and economical and ensure the functionality of adjustments. PONSSE Eco Drive is a system that instructs the user and gives measured feedback. Eco Drive can measure the effect of servicing on the productivity of the machine, for example.

### MANAGEMENT OF SERVICE NOTES

The service section of PONSSE Manager makes it easy to check when the machines require servicing. The application displays the machine hours, and a scheduled maintenance interval can be set for the machines so that the application reports when the time of service is approaching. In addition, the operator can record notes on servicing needs directly via a menu in the Opti 4G data system of the machine.



### TRANSPORT MANAGEMENT

When machine transport is needed, the operator can place the order directly via a menu in the Opti 4G control system.

### REPORTING

Reporting is part of PONSSE Manager. You can analyse the machine production volumes and fuel consumption in different ways and monitor and print out measuring certificates.

With the reports produced by PONSSE Manager, you can compare the productivity of your machines and keep an eye on their fuel consumption. The work area reports clearly and precisely indicate the amounts of cut timber grades and average stem sizes. You can print measuring certificates and compare various machine statistics within your chosen timespan. You can easily monitor your company's operational efficiency and use the information collected in operational planning later.

## SPARE PARTS STORE THAT IS ALWAYS OPEN

# PONSSE PARTS ONLINE

PONSSE Parts Online provides an impressive amount of information on your machine and compatible spare parts.

Find the correct parts and check their real time prices and availability at any time of the day.

You can order the parts to be delivered from the PONSSE service centre of your choosing to any location you want.



The easy-to-use **PONSSE PARTS ONLINE** works on all devices. Machine-specific information, order history and exploded-view drawings can all be found in PONSSE Parts Online. The service also provides easy access to Instruction Manuals and spare parts manuals when required, which makes PONSSE Parts Online much more than just an application for ordering spare parts. And best of all – it's completely free!

The **PONSSE PARTS OFFLINE** feature works when you do not have an internet connection, or your connection is poor. You can place your order any time you want, and the order will be sent as soon as your device reconnects. Parts Offline ensures that your order is not erased even if you lose your connection. The feature is integrated into the Parts Online application and does not need to be installed separately.

[HTTPS://WWW.PONSSE.COM/EN/SERVICES](https://www.ponsse.com/en/services)

### HOW TO START USING THE SERVICE:

1. ORDER YOUR PONSSE MANAGER IDS
2. INTRODUCTION TO THE SYSTEM
3. ACTIVATE YOUR USER ID





## EXPERTISE AND VISION COME FROM COOPERATION

# OPERATOR TRAINING

When purchasing a new machine, Ponsse offers you extensive operator training – we will familiarise you with your new machine in your own language. We use forest machine and servicing simulators as an aid to our training. Operator training for harvesters is divided into three parts, and training for forwarders into two parts.



### THEORETICAL TRAINING BEFORE DELIVERY OR ON DELIVERY FOR HARVESTERS

- manuals and their contents
- beginning and completing a work area and the Opti display information
- automation settings and harvester head functions according to work phases
- measurements and maintenance
- efficient working methods
- PONSSE Eco Drive

### ON-SITE OPERATOR TRAINING ON DELIVERY

#### BASE MACHINE

- daily inspection and maintenance items
- controls
- use of heating and air conditioning systems
- automatic lubrication functions

#### TRANSMISSION

- drive mode settings

#### OPTI CONTROL SYSTEM

- operator-specific adjustments and settings
- efficient utilisation of new automation features
- inspection and use of calipers, random control sampling settings, calibration and fine-tuning for length and diameter
- reports and data transfers

#### HARVESTER HEAD

- daily and weekly preventive maintenance and greasing points
- replacing the saw bar and chain and chain lubrication adjustments
- fine-tuning delimiting knives and adjusting the height of the upper knife
- wheel options for length measurements and spring tension

#### CRANE/LOADER

- daily and weekly preventive maintenance and greasing points
- checking the tension of the extension's chains
- fine-tuning crane movements

#### SAFETY

- door limit, reversing buzzer and chain shots
- storage position: base machine, harvester head and grapple

#### FORWARDER WITH A SCALE

- run-through of the structure
- Opti-PC scale software
- use: weighing, calibration, reports and data transfer
- service and maintenance

### ON-SITE OPERATOR TRAINING FOLLOW-UP DAY A MONTH AFTER DELIVERY

- crane adjustment
- automatic calibration of the harvester head
- operator-, machine- and harvester head-specific settings
- tips for economical driving: HST drive and PONSSE Eco Drive
- working techniques and methods
- pressure measurements



Operator training is an integral part of each new PONSSE forest machine delivery. The training ensures that operators know how to make full use of the features of their new machines, work efficiently and minimise operating costs. During operator training, the customer will also learn valuable information about preventive maintenance, machine upkeep and the scheduled maintenance programme.



**FOCUS ON EFFICIENT AND PRODUCTIVE HARVESTING**

# **PONSSE ACTIVE CARE MAINTENANCE AGREEMENT**

PONSSE Active Care maintenance agreements comprise the best possible service for forest machine entrepreneurs: you can focus on harvesting, while Ponsse takes care of scheduled maintenance and machine optimisation. Your machine will always be maintained and inspected regularly by a professional, using high-quality PONSSE original parts, lubricants and filters only.

## **PONSSE ACTIVE CARE MAINTENANCE AGREEMENT FOR NEW OR USED FOREST MACHINES**

### **SCHEDULED MAINTENANCE**

- Basic scheduled maintenance: by Ponsse service, the customer's maintenance facilities or by the customer
- Complete scheduled maintenance: by Ponsse service or in the customer's maintenance facilities

### **PREVENTIVE MAINTENANCE**

- You can add preventive maintenance to your maintenance agreement in accordance with your machine and operating environment.

### **ADDITIONAL SERVICES**

- You can supplement your Active Care maintenance agreement with the additional services of your choice. In addition, the maintenance agreement entitles you to Ponsse's additional services like software updates for your machine without separate update costs.\*

\* If updating the software requires the Opti PC to be changed, it will be invoiced separately.

#### **USABILITY**

Regular maintenance and original parts keep your machine reliable and give your machine the best possible usability.

#### **CUSTOMISATION**

A maintenance agreement for your specific needs, with customised hours and content

#### **MACHINE VALUE**

Maintain a high resale value for your machine

#### **FIXED COSTS**

No unexpected maintenance costs during the agreement period

#### **PRODUCTIVITY**

Keep your machine's productivity and fuel economy high

#### **FOCUS ON YOUR KEY BUSINESS**

Let Ponsse take care of all maintenance services, so you can remain focused on harvesting

**WHEN YOU CHOOSE THE ACTIVE CARE MAINTENANCE AGREEMENT, YOUR MACHINE WILL AUTOMATICALLY HAVE A FRAME & CRANE CARE WARRANTY OF 10,000 HOURS.**

The maintenance agreement must be valid for the entire Frame & Crane Care warranty period. The Frame & Crane Care warranty can be selected for a PONSSE forest machine manufactured in 2021 or later. Parts used in connection with the Frame & Crane warranty are reconditioned PONSSE parts, and repairs of frame damage are covered by the warranty. The regular warranty conditions and regular working hours apply. Travel time and travel expenses are not included in the warranty.



## **ACTIVE CARE**

Even the best forest machine in the world needs maintenance to operate productively and reliably from one logging site to the next. With a customised PONSSE Active Care maintenance agreement, you let Ponsse maintain your forest machine.



## PEACE OF MIND WITH ADDITIONAL PONSSE ACTIVE CARE+ COVER

You can add the excellent Active Care+ service to the maintenance agreement of your new forest machine. With extended care, you can extend Ponsse's excellent factory guarantee of 2,000 hours by another 4,000 hours. As a result, extended care is valid up to 6,000 hours/3 years. Active Care+ is an unprecedented maintenance agreement that covers 100 per cent of all main machine components.



### PONSSE ACTIVE CARE+ MAINTENANCE AGREEMENT WITH EXTENDED CARE FOR NEW FOREST MACHINES

**MACHINE CONTROL SYSTEM:** Opti PC, control modules, display and Connectivity Unit.

**ENGINE:** The entire engine and its accessories.

**TRANSMISSION:** Hydrostatic transmission pump and motor. CVT.

**RANGE SELECTOR:** Transfer box.

**MIDDLE PIVOT:** Middle pivot and articulated frames (Frame & Crane Care warranty), middle pivot horizontal bearings, frame oscillation lock plates and cylinders. Pins or bearings included in the middle pivot structure not included.

**BOGIES AND AXLES:** Bogie housings, hubs, gears, brakes, cardan shafts. Mechanical wear or bending caused by wheel chains or tracks not covered.

**STABILISATION SYSTEM:** Stabilisation system valves.

**PUMP TRANSFER BOX (BEAR, ERGO, SCORPION KING)**  
Pump gear box, clutch between the engine and hydraulic pumps.

**HYDRAULICS:** Working hydraulics pumps, valves and cylinder pipe structure (welds).

**HYDRAULICS COOLING SYSTEM:** Cooling circulation pump and engine, radiators and fans.

**CABIN SLEWING:** Cabin slewing mechanism in PONSSE Scorpion.

**CRANE:** Crane slewing device, including the motor, base, booms, extensions, connecting blocks inside the boom, and Active Crane modules.

**HARVESTER HEAD:** Frame, hanger and control module (frame and hanger are repaired in the first instance).



EXTENDED CARE UP TO **6,000** HOURS  
COVERAGE **100%** FOR MAIN COMPONENTS



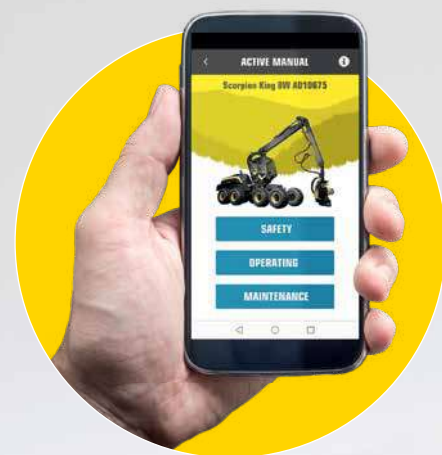
**EVERYTHING OK, ALL THE TIME**

## **DOCUMENTS**

Ponsse's detailed Owner's Manuals and spare parts manuals help you to find the information you need about your machine's operation and maintenance. The experienced PONSSE documentation personnel prepare Owner's Manuals, as well as spare parts manuals, in close cooperation with technical support and research and development. Ponsse will deliver the manual for your machine either as a hard copy or in electronic format in your own language. Owner's Manuals will also be installed on your forest machine's Opti computer so that they will always be conveniently available, wherever your machine is.

With a new forest machine, we deliver Owner's Manuals and spare parts manuals for the base machine, crane and harvester head. The machine delivery also includes an Instruction Manual for Opti information systems.

The documents are machine-specific, i.e. prepared just for the machine you have purchased. All documents are available as hard copies or on a USB memory stick, and they are also available on the PONSSE forest machine's Opti computer. If you have purchased a used machine or wish to obtain new documents for your machine, please contact your closest service centre.



### **OWNER'S MANUALS**

#### **Owner's manuals for base machine, crane and harvester head**

Owner's Manuals include information on how the forest machine works, how it can be safely used, its technical features and issues related to the everyday use and maintenance of the machine. The manuals also include electronics and hydraulics diagrams to assist in maintenance. Owner's Manuals are available in 26 different languages.

### **ACTIVE MANUAL APPLICATION**

Install the Active Manual application on your smart device to access an enormous amount of material anywhere, anytime. Active Manual includes videos on everyday use and maintenance tips and makes them easy to access in one place. The videos are highly instructive. Active Manual makes maintenance easy – there's no need to hunt for information when it's already in your pocket. Download the application from the Google Play store or the AppStore free of charge.



### **Opti information system Instruction Manual**

The Instruction Manual of the PONSSE Opti information system includes detailed information on the features of the Opti information system applications in order to make their use as easy and effective as possible. Instruction Manuals are currently available in 25 different languages.

### **SPARE PARTS MANUALS**

Your machine-specific spare parts manual helps you when you need parts to maintain your machine. The manual includes exploded-view drawings of assemblies. This can be used when disassembling and assembling components. Spare parts manuals are currently available in ten different languages.

**SUPPORT RIGHT WHERE IT IS NEEDED**

## **MAINTENANCE NETWORK**

When acquiring a harvesting solution from Ponsse, you also have access to technical support. Our goal is to address local conditions and bring our services as close to you as possible. At our factory, we provide comprehensive support for local service centres, for example, in the form of training. PONSSE customer service centres, field maintenance and maintenance help desk are there for you whenever you need support. You can also let Ponsse maintain all your harvesting machines.



### **CUSTOMER SERVICE NEAR EVERY LOGGING SITE**

We have 24 offices around Finland in the optimal places in relation to the area's logging sites. Proximity and short turnaround time are key when a machine needs servicing. The need for servicing can sometimes be unexpected. That is when our expert staff and extremely fine-tuned spare parts logistics come in handy. Our professionals provide quality service, both in the maintenance building and at logging sites. This ensures that the time the machine is out of operation is as short as possible. We genuinely want to return the machines to productive work as quickly as possible.

### **FIELD MAINTENANCE IS AT THE CORE OF OUR SERVICES - WE EXIST FOR OUR CUSTOMERS**

It is often more productive to bring the maintenance to the machine than to bring the machine in for maintenance. PONSSE Field Maintenance only employs seasoned professionals, whose ability to quickly solve problems at the logging site is the best in the game. Their well-equipped maintenance vehicle has all the tools they need to ensure the work can be carried out quickly and smoothly at the site. When we fix machines, we are ultimately helping a friend, the machine owner or the operator. The faster the machine is operational again, the better the results are on your balance sheet.

### **ON-CALL MAINTENANCE HELPS DURING EVENINGS AND WEEKENDS**

Needs for repairs do not always arise during office hours, so we work outside them as well. When a need arises, our on-call maintenance service can help with questions related to the use or maintenance of your machine or with troubleshooting when necessary. If the issue cannot be solved via phone, our service engineer forwards your request to field maintenance or books maintenance for you. Our on-call spare parts service guarantees spare parts are available late in the evening and during weekends.

## **PONSSE MAINTENANCE HELP DESK**

### **MAINTENANCE HELP DESK**

**TEL. +358 20 768 8163**

Mon to Fri 7 am to 9 pm

Sat 8 am to 6 pm

### **INFORMATION SYSTEM MAINTENANCE HELP DESK**

**TEL. +358 20 768 8150**



# RELIABILITY USING HIGH-QUALITY ORIGINAL PARTS

A machine's quality is determined by the quality of its parts. PONSSE Original parts are designed and manufactured for use in PONSSE forest machines. This ensures they fit your machine. They ensure your machine works reliably and has a long service life. Original parts are always available in our warehouse. By using PONSSE Original parts you ensure that your machine can be serviced as quickly as possible, and that it maintains its original high quality.

# GENUINE

## PONSSE PARTS OFFLINE

The PONSSE Parts Offline feature works when you do not have an internet connection, or your connection is poor. You can place your order any time you want, and the order will be sent as soon as your device reconnects. Parts Offline ensures that your order is not erased even if you lose your connection. The feature is integrated into the Parts Online application and does not need to be installed separately.





# REMAN



## REMANUFACTURED PARTS

PONSSE Remanufactured Parts offer you a low-cost and eco-friendly way to replace damaged original parts. Return the damaged part to us and replace it by buying a remanufactured part reconditioned at the PONSSE Reconditioning and assembly centre. You will receive compensation for the returned part when you purchase a remanufactured part, this provides you with considerable cost savings. As a guarantee of quality, Ponsse provides remanufactured parts with a six-month warranty. Service flexibility is ensured by Ponsse's own reconditioning and assembly centre with more than 10 years' experience.



**ORIGINAL**  
Used or damaged  
spare part.



**RECONDITIONED AND TESTED**  
AT THE PONSSE Reconditioning  
and assembly centre



**AS GOOD AS NEW  
AND AFFORDABLE  
REMANUFACTURED PART  
WITH A 6-MONTH WARRANTY**

Parts are given new life in the expert hands of our professionals. This results in significant savings to you, because remanufactured parts are significantly more affordable than new parts. The reduced environmental load is a great added bonus. Reusing parts saves a corresponding amount of metal and energy. All REMAN parts are carefully inspected, and faulty components are replaced with new ones. REMAN parts come with a 6-month warranty, so you can trust that they are high quality.

Return damaged parts to us. We will compensate you fairly when you purchase a REMAN part to replace the damaged part. You save a considerable amount of money compared with purchasing a new part. Sustainable development requires recycling everything to the fullest extent possible. When a spare part is used again, recycling it as raw materials can be postponed considerably.

The range of PONSSE Remanufactured parts is continuously expanding. For more information about the updated range of parts, please contact the nearest PONSSE service centre.



## PONSSE PARTS ONLINE

**PARTS ONLINE 24/7**

Read more and check the product range:

<https://www.ponsse.com/en/services/spare-parts>





## INSPECTED BUDGET PARTS

PONSSE Budget parts are considerably more affordable than regularly priced parts. They can have slight cosmetic defects or cannot be sold as new for other reasons. They are still completely fit for use, which has been validated with an inspection. Most budget parts have been slightly damaged during transport and have been removed from storage or the assembly line as a result. They can also be completely new prime quality parts for older machines that are no longer sold as new parts due to low demand. The functionality of budget parts is guaranteed, but they are not covered by our usual spare parts warranty or the right to return. Availability varies, so keep an eye on our continuously updated budget part list.



**ORIGINAL**  
Disassembled or  
recycled part



**INSPECTED**  
AT THE PONSSE Reconditioning  
and assembly centre



**€ THE MOST AFFORDABLE  
ALTERNATIVE  
TO ORIGINAL PARTS  
WITH GUARANTEED  
FUNCTIONALITY**

The range of budget parts consists of more than 500 different items, the most typical of which include engine covers, doors and covers for external repairs. The range also includes the spare parts listed below:

- wheels
- cylinders
- hydraulic motors and pumps
- computers
- switches and buttons
- pins and valves

The range of PONSSE Budget parts is expanded continuously. For more information about the updated range of parts, please contact the nearest PONSSE service centre.

## PONSSE PARTS ONLINE

**PARTS ONLINE 24/7**

Read more and check the product range:  
<https://www.ponsse.com/en/services/spare-parts>

# BUDGET







## BASE MACHINE PARTS

Poly V-ribbed belts .....	24	Antennas.....	30
Engine.....	25	Cameras and displays .....	31
Cabin.....	26	Lights.....	32
Batteries.....	27	Light bulbs.....	33
Air conditioners and heaters.....	28	Fuel tanks.....	34
Wiper accessories.....	28	Base machine protective covers 2000-2015.....	35
Filters and filter sets .....	29	Base machine protective covers 2015-.....	36

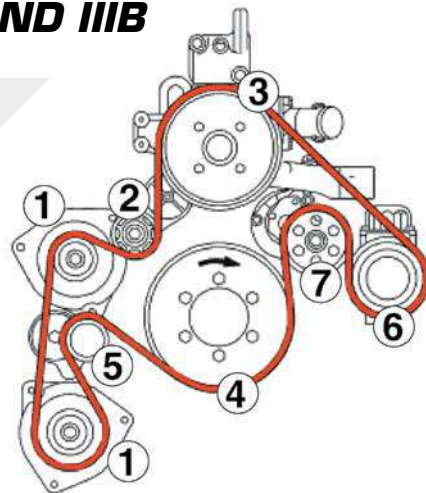


## POLY V-RIBBED BELTS

POLY V-RIBBED BELTS FOR PONSSE FOREST MACHINES EQUIPPED WITH AN MB ENGINE		
OM904&OM906	2,482 mm	DC9069934796
Accessory	2,482 mm	0072828
OM904&OM906	2,580 mm	DC9069975592
Accessory	2,580 mm	0072829
EU STAGE IV / TIER 4F / STAGE V		0076044

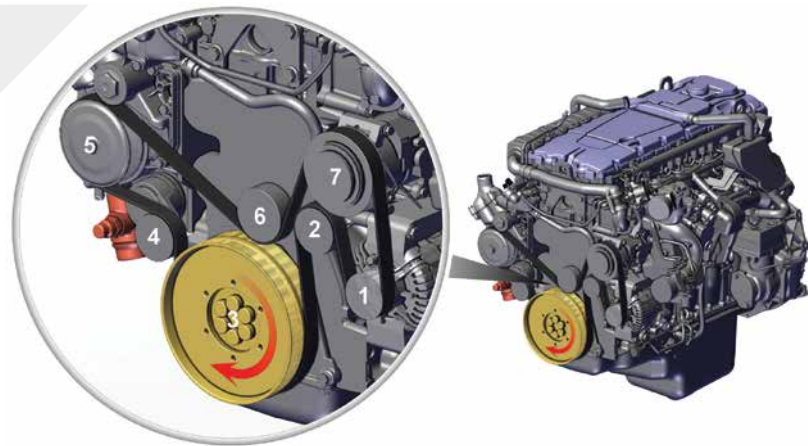
### POLY V-RIBBED BELT EU STAGE IIIA AND IIIB

- 1 Charging alternator
- 2 Guide roller
- 3 Water pump
- 4 Crankshaft
- 5 Tightening roller
- 6 Air conditioning compressor
- 7 Support roller



### POLY V-RIBBED BELT EU STAGE IV / TIER 4F / STAGE V

- 1 Charging alternator
- 2 Guide roller
- 3 Crankshaft
- 4 Tightening roller
- 5 Water pump
- 6 Guide roller
- 7 Air conditioning compressor



### INSTRUCTIONS ON HOW TO CHECK BELT CONDITION

- Check the condition of the poly V-ribbed belt regularly.
- Replace the poly V-ribbed belt if it is in poor condition. The belt may not work properly if it is incorrectly installed, worn, torn, frayed or dirty.
- Before starting to replace the poly V-ribbed belt, contact an authorised PONSSE service for more detailed instructions on how to replace the belt.

The engine may overheat if the poly V-ribbed belt does not work properly. For example, it may not run the cooling pump or charging alternator.

If the poly V-ribbed belt is in poor condition, it may be torn, and the entire belt or parts of it may fly off from the engine and cause injuries.

## ENGINE



CHARGING ALTERNATORS	
NL1 80 A MB	DC009154980280
NCB 80 A MB	0070354
REMAN	0070354V
NCB2 100 A	0070304
REMAN	0070304V



CHARGING ALTERNATOR CONTROLLERS	
For NL1 80 A charging alternators	0072087
For NL1 80 A/100 A charging alternators, accessory	BOS1197311304
For 80 A NCB charging alternators	BOSF00M145307
For 100 A NCB charging alternators	BOSF00M145307
NCB/NCB2 100 A, accessory	BOSF00M145307



AIR COMPRESSOR REPAIR KIT	
0074031 for compressors	0083315



STARTER MOTORS FOR PONSSE FOREST MACHINES	
MB	0077902
MB	BOS0001231002



SCR SYSTEM PARTS	
Dryer, complete	0068425
Filter element for complete dryer	0071206
AdBlue/DEF pump, EU STAGE IIIB	0068430
AdBlue/DEF pump, EU STAGE IV	0072579
Filter, AdBlue/DEF pump, EU STAGE IIIB	0071207
Filter, AdBlue/DEF pump, EU STAGE IIIB	0076959
Dosing unit, AdBlue/DEF, EU STAGE IV	0072402
Magnet for AdBlue/DEF tank	0071910
Bracket for magnet	0071912

## REMAN PARTS

The range of PONSSE remanufactured parts is continuously expanding. For more information about the updated range of parts, please contact your nearest PONSSE service centre.





## CABIN



SEATS	
PONSSE Seat	0076375
<b>REMAN</b>	0076375VR
BEGE 9000 SE with armrests	0028484
BEGE 9000	0064821
BEGE 9000 SE Airvent with side supports	0064820
BEGE 9000 SE Airvent with side support and compressor	0067163
BEGE 3000C&F AIRVENT, 3100L, rotating armrests, Scorpion	0072983
<b>REMAN</b>	0072983VR
BEGE 9000SE, rotating armrests, Scorpion	0072985



ARMREST COVERS	
Armrest cover to protect the padding. Placed between the armrest and operator's arm. The cover reduces sweating or feeling cold because of the armrest. Easy to install over the armrest padding; the fixing studs at the bottom pierce the bottom of the fabric, and the padding is pressed firmly into place.	0083265
Compatible with armrest padding. Regular firmness: P36096 and P36092 Soft padding: P63454 and P63455	
Package: left and right	



SEAT COVERS	
Long, with headrest	0055236
Long, airbag ready	0068231
Short, without headrest	00552361



SEAT BASES AND SEAT ACCESSORIES	
Seat, PONSSE Seat	0076779
With mechanical locking	0080650
Pneumatic locking, high	0055152
Brake chain	0063369
Brake chain kit (including chain + chain fasteners)	0059070
Brake kit (including chain + brake belt + fasteners)	0059068



PONSSE FABRIC FLOOR MATS FOR CABIN	
For cabins of model series 2015 (not PONSSE Scorpion)	P48118
For PONSSE Scorpion cabins	P49149

## BATTERIES

Battery condition is an essential part of ensuring the uninterrupted operation and safe use of forest machines. A low battery fluid level and a poor fastening of battery clamps may even damage electrical system components. The battery fluid contains acid. Use the personal protective equipment required when checking the fluid level. The fluid level does not need to be checked from maintenance-free batteries.



0078097



0078099



0060036



0055999



0064177



0072661

BATTERIES	
UPS battery 24H	0055999
Radio battery	0060036
Cabin battery, TP2000 DC machines 17 Ah	0059498
Cabin battery, TP2000 AC machines 10 Ah	0062318
CALIPER	0055998
CALIPER+	0062046
Caliper3	0072661
95 Ah Yuasa +/-	0078097
95 Ah Yuasa -/+	0078099
110 Ah	0026419
142 Ah	0026420
180 Ah Yuasa	0077448
185 Ah	0064177



## AIR CONDITIONERS AND HEATERS



### FAN MOTORS

TP2000	0060586
Machines 2010 »	0068608
MS2015 Webasto	0074812
MS2015 MCC	0081305



### COMPRESSORS

Compressor, MB engine accessory compressor, EU STAGE IIIA & IIIB	0067190
--	---------



## WIPER ACCESSORIES



### WIPER BLADES

350 mm	0072211
500 mm	0073070
600 mm	BOS3398110425
700 mm	0068828
800 mm	0036013
1,000 mm	0076111
1,000 mm	0072206



### WIPER ARMS

For 700 mm blades	0068827
For 1,000 mm blades	0068826
For side window wiper	BOS3398102285100



### WIPER MOTORS

TP2000, front	0068824
TP2000, rear	0068823
SIDE WINDOW, old model	BOS0390217701100
SIDE WINDOW, right	0077605
SIDE WINDOW, left	0077604

## FILTERS AND FILTER SETS

You can get all the filters required for scheduled maintenance from Ponsse in a convenient and affordable package. You can easily order the filter set for your machine type with only a single part number.

By using original PONSSE filters, you can ensure the reliable operation of the system. The machine's maintenance intervals have been defined in accordance with the filtering capacity of original filters. When using non-standard filters, their functionality during the entire maintenance interval defined by Ponsse cannot be guaranteed. Even if filters resembled each other on the outside, there may be so significant changes in their flow channels that not the full filtering cycle can be completed. Furthermore, there are differences in the capacity and durability of filter elements. A simple test is to compare the weight of filter elements. Lighter non-standard filters have fewer filtering layers and supporting structures. If the filter's filtering capacity cannot cover the entire maintenance interval, the filter will be clogged. Due to its weaker supporting structure, the filter may tear and contaminate the entire system.

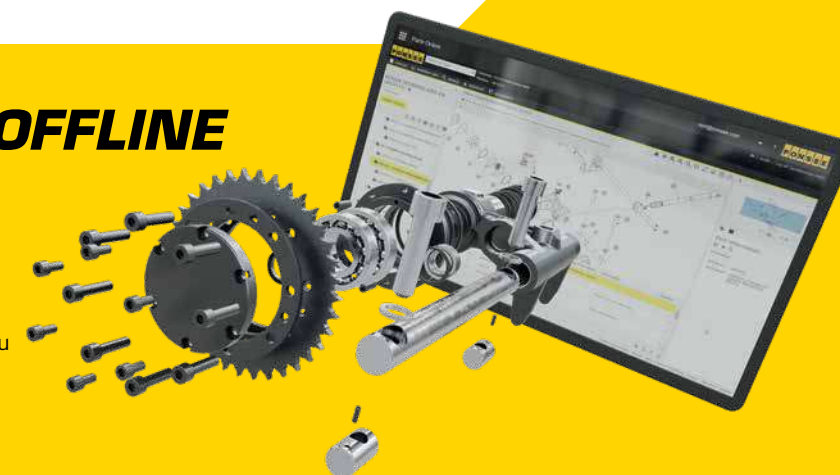
### BENEFITS OF THE FILTER SET:

- save time during maintenance preparations
- get the filters you need more economically
- all the appropriate filters are available during maintenance
- all filters in the set are of the original PONSSE quality



## PONSSE PARTS OFFLINE

The PONSSE Parts Offline feature works when you do not have an internet connection, or your connection is poor. You can place your order any time you want, and the order will be sent as soon as your device reconnects. Parts Offline ensures that your order is not erased even if you lose your connection. The feature is integrated into the Parts Online application and does not need to be installed separately.







## ANTENNAS

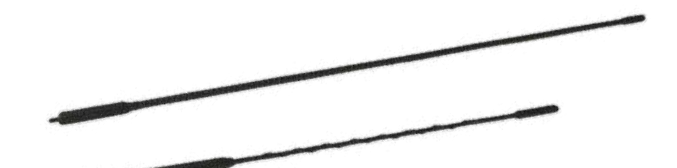
### RADIO ANTENNA, BOSCH

Antenna + base + cable	0026732
Whip antenna » 2011	BOS8698114571



### GSM ANTENNA

Long GSM whip	0062057
GSM antenna package [includes the antenna, base, cable, mini-UHF connector]	0062150



### COMBINED GSM + RADIO ANTENNA

Antenna + base	0075265
Whip antenna	0062510

### WINDOW ANTENNA

Window antenna GSM + GPRS	0062539
---------------------------	---------

### GPS ANTENNA

GPS antenna, for Sierra modem 2x2G/3G/4G+GPS/Glonass	0076102
GPS antenna, for Sierra modem, 30 mm base	0068808
GPS antenna, for Sierra modem, 10 mm base	0073889
GPS cable	161649
GPS cable PC5	PS0439
Opti6 & Opti7	0071867

### HARVESTER HEAD WINCH ANTENNAS

EU5 (Europe, South America, Australia)	0073566
US4 (North America)	0075891
CN2 (China)	0075892



### FOR OPTI & SIERRA MODEM

MIMO antenna + GPS & Glonass	0076102
------------------------------	---------



### MODEM ANTENNA

GSM & GPS	0073889
-----------	---------



### RADIO ANTENNA

Similar as previous 0062196	0075265
-----------------------------	---------



### ACCESSORY FOR DAB RADIO

With this accessory, 0075265 radio antenna can be used for DAB radio. PS1374 cable set also needed.



### FORWARDER ANTENNAS

EU5 (Europe, South America, Australia)	0075770
JP1 (Japan)	0075654
CN2 (China)	0075653
US4 (North America)	0075126



## CAMERAS AND DISPLAYS



0076886

### REVERSING CAMERA

Camera, MEKRA MCC-5019 120deg, front camera	0076260
Camera, MEKRA MCC-5017 100deg, cabin camera	0076261
Scorpion cabin camera	0076886
Performance package – reversing camera [includes the camera + display + installation kit]	0078411
Performance package – 3-camera system Scorpion. Mounted to frame pipes.	0077880
Reversing camera, Scorpion	0076886
Performance package, reversing camera package, MEKRA	0078411
Camera, 281301007099 MEKRA MCC-5023 70DEG, Scorpion diesel frame camera, 3-camera system	0076886
Camera, 281301001099 MEKRA MCC-5017 100DEG, Cabin camera	0076261
Camera, 281301003099 MEKRA MCC-5019 120DEG, Forwarder, rear frame	0076260
Display, 241301517001 MEKRA, All variations	0077635
<b>BUDGET</b>	0077635B
Cable, 091301150001 MEKRA MAC-5402, 1.6 m	0078007
Cable, 091301152007 MEKRA MAC-5123, 4 m	0076264
Cable, 095610111 MEKRA MMC-0005, 5 m	0080494
Cable, 095610121 MEKRA MMC-0011, 11 m	0076265



0056252



0074250



0081327

### OPTI ACCESSORIES

Mouse, PS/2	0056252
Mouse, USB	0071313
Keyboard, PS/2	0057598
Keyboard, USB	0074250
Keyboard, wireless	0081327



**LIGHTS**



**HEADLIGHTS**

Headlight	0056153 / 0058468
Headlight H4	0056153
Headlight with parking light H4	0058468
H4 24 V/70 W headlights	0024588

**HEADLIGHTS, MODEL SERIES 2015**

Headlight, Scorpion	0073925
Headlight, low beam, Other models	0072393
Headlight, high beam, Other models	0072394
Rear light, Scorpion	0073813



**PONSSE WORKING LIGHTS**

Gas-discharge working light, standing	0070095
Gas-discharge working light, suspended	0070094
Gas-discharge working light, standing, booster 24 V 45 W	0069530
Gas-discharge working light, suspended, booster 24 V 45 W	0069531
Gas-discharge working light, standing, 12 V	0068476
Gas-discharge working light, suspended, 12 V	0068526
HALOGEN H3, standing	0066845
HALOGEN H3, suspended	0066846
Adapter T-Hella Xenon	PS0033
Adapter S-Hella Xenon	PS0034
Adapter H3 Halogen-Ponsse, gas-discharge working light	PS0534
Adapter Hella Xenon-Ponsse, gas-discharge working light	PS0535
Connector (Nordic)	0067759

**LED WORKING LIGHTS**

Standing N44 12-24 V 40 W 1900 lm	0070633
Standing, N4402 LED 12-24 V 50 W narrow beam, 4200 lm	0076468
Standing, N4402 LED 12-24 V 50 W wide beam, low bracket, 4200 lm	0076471
Standing, N4402 LED 12-24 V 50 W wide beam, 4200 lm	0076470
Suspended, N4402 LED 12-24 V 50 W wide beam, 4200 lm	0076472
Suspended, N4402 LED 12-24 V 50 W narrow beam, 4200 lm	0076478
Suspended N44 12-24 V 40 W 1900 lm	0071467
High beam N44 12-24 V 40 W 1900 lm	0071468
N46 12-24 V 50 W 3500 lm	0071327
N10LED 12-48 V	0072028



**LED LIGHTS WITH MAGNETIC FASTENINGS**

Bright LED, e.g. maintenance light, site demonstration.	
10-30 V 5.5 W bright, 3 m cable	0073744
10-30 V 5.5 W bright, 5 m cable	0073745
10-30 V 5.5 W bright, 10 m cable	0073746
Red LED, e.g. indicator light, e.g. for marking an oversized load	
9-30 V 2 W bright, 3-m cable	0072322
9-30 V 2 W bright, 5 m cable	0072323
9-30 V 2 W bright, 10 m cable	0072324

**LIGHT BULBS**



**WORKING LIGHT BULBS**

Xenon bulb D2S, Hella	0075643
HID bulb, PONSSE gas-discharge light D1S	0067514
HID bulb, D2S, Osram	0068471
H3 24 V/70 W	0013110
H3 24 V/60 W long life	0013110



**LARGE BULBS WITH METAL CAP**

24 V/21 W	0012799
24 V/15 W	0012808
24 V/5 W	0012815



**FOR CONTROL PANELS**

24 V/1.2 W glass cap, pressed	0012930
24 V/1.2 W glass cap + base	0056856
24 V/1.2 W glass cap, turned	0012931
24 V/3 W metal cap	0012914



**BULB SET**

Bulb set	0071279
----------	---------



**TP2000 CABIN**

24 V/10 W halogen	0060131
-------------------	---------

**PONSSE PARTS ONLINE  
PARTS ONLINE 24/7**









## BASE MACHINE PROTECTIVE COVERS 2015-



### EXHAUST PIPE PROTECTIVE FRAMES

Suitable mask: AM04809 mask or P54217 bracket.  
For engines: 3A & 4F

Machine model and serial number	No.
Buffalo 8W A080003-A080332	0075943
Buffalo 6W A150001-A150009	
Buffalo AF A060003-A060082	
Buffalo Dual A140001-A140008	
Buffalo King 8W A120001-A120086	
Buffalo King 6W A190001-A190009	
Elephant 8W A180001-A180027	
Elephant AF A200001-A200015	
Elephant King A130001-A130058	
Elephant King AF A110001-A110024	
Bear 8W A020024-A020094	
Ergo 6W A100001-A100041	
Ergo 8W A090005-A090320	

### EXHAUST PIPE PROTECTIVE FRAMES

Suitable mask: AM05543 / AM06666 mask or P56352 bracket.  
For engines: 3A & 4F

Machine model and serial number	No.
Buffalo 8W A080333-A080643	0079594
Buffalo 6W A150010-A150014	
Buffalo AF A060083-A060159	
Buffalo Dual A140009-A140017	
Buffalo King 8W A120087-A1200160	
Buffalo King 6W A190010-A190017	
Elephant 8W A180028-A180087	
Elephant AF A200016-A200023	
Elephant King A130059-A130141	
Elephant King AF A110025-A110042	
Bear 8W A020095-A020157	
Ergo 6W A050061-A050104	
Ergo 8W A090321-A090569	
Ergo AF A220001-A220018	

### EXHAUST PIPE PROTECTIVE FRAMES

Suitable mask: AM05543 / AM06666 mask or P56352 bracket.  
For engines: 3A, 4F & StageV

Machine model and serial number	No.
Buffalo 8W A080644 »	0081529
Buffalo 6W A150015 »	
Buffalo AF A060160 »	
Buffalo Dual A140018 »	
Buffalo King 8W A1200161 »	
Buffalo King 6W A190018 »	
Elephant 8W A180088 »	
Elephant AF A200024 »	
Elephant King A130142 »	
Elephant King AF A110043 »	
Bear 8W A020158 »	
Ergo 6W A050105 »	
Ergo 8W A090570 »	
Ergo AF A220019 »	
Cobra A260001 »	
Bison AF A250001 »	

### EXHAUST PIPE PROTECTIVE FRAMES

Suitable mask: AM05543 / AM06666 mask or P56352 bracket.  
For engines: 3A, 4F & StageV

Machine model and serial number	No.
Wisent 8W A030132 »	0081530
Elk 8W A070148 »	
Elk 6W A170003 »	
Gazelle A160022 »	
Fox 8W A230001 »	
Beaver A100057 »	

0081530 Bolt holes for the exhaust pipe cover are located in the bumper casing box. Machines manufactured starting from November 2017 include holes and welded nuts for fastening. In older machines, holes need to be drilled and nuts need to be welded inside the casing.



### PONTOON PROTECTIVE COVERS (NOT SCORPION)

Description	pcs	No.
MS2015 Pontoon protective package	1	0080352



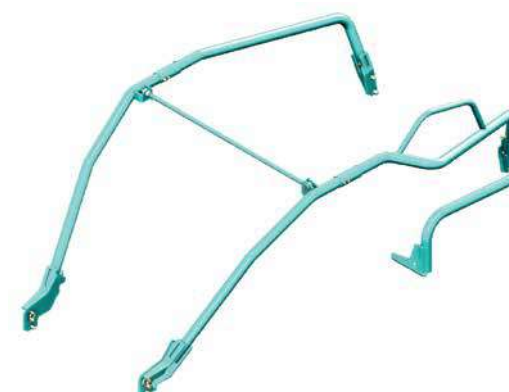
### LIGHT COVERS

MS2015 machine models (not Scorpion)	0075944
--------------------------------------	---------



### BASE MACHINE BUMPER CASING COVERS

Model Series 2015	0078433
-------------------	---------



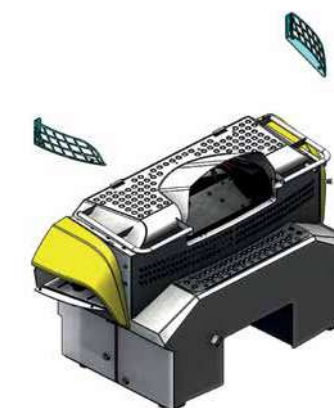
### FRONT FRAME PROTECTIVE FRAMES

Machine model and serial number	Suitable mask	For engines	No.
Scorpion A040034-A040117	AM04809	3A & 4F	0075940
Scorpion King A010079-A010278			
Scorpion A040118-A040237	AM05543	3A & 4F	0079206
Scorpion King A010279-A010550	AM06666		
Scorpion A040238 »	AM06937	3A, 4F & StageV	0085450
Scorpion King A010551 »	AM08262		

Front frame protective frames can only be installed in machines equipped with a front cover. Pipes in package 0079206 also include fastening points for a system of three reversing cameras.

### TO BE NOTED REGARDING THE SUITABILITY OF PROTECTIVE FRAMES:

- In early models, extra fastening holes may need to be drilled for protective frames.
- For the exhaust pipe cover, the engine cover's front cover acts as a fastening point. To install, the machine must include a front cover or a bracket with a fastening point.
- Front covers are available in two models with different widths. This means that different masks require different pipes!



### HYDRAULIC TANK LIGHT COVERS

MS2015 machine models (not Scorpion)	0079617
--------------------------------------	---------



### FUEL TANK COVERS MS2015

Description	pcs	No.
<b>ERGO &amp; COBRA</b>		
Fuel tank protective pipes	1	0075941
Fuel tank lower protective covers	1	0080750
<b>BEAR</b>		
Fuel tank protective pipes	1	0075942
Fuel tank lower protective covers	1	0080750





## **WHEELS, CHAINS AND TRACKS**

You can choose the most affordable option in all price groups from our extensive range. For your convenience, we have collected the products from the largest manufacturers in the business that best fit PONSSE machines for use in different conditions.

Wheels.....	40	Olofsfors tracks.....	46
PONSSE wheel chains .....	42	Clark tracks .....	48
Tellefsdal U-Grip chains .....	42	Yellow tracks .....	52
OFA chains .....	42	OFA tracks .....	53
Nordchain chains .....	43	KOPA tracks.....	53
Fram Forestry chains .....	44	Track mounting tools.....	54
Chain mounting tools and accessories .....	44	Track accessories.....	55



**WHEELS**



TRELLEBORG TWIN FORESTRY T440		
710/45-26.5 20PR 168/A8 TRELLEBORG T440		0076979
600/55-26.5 20PR 165/A8 TRELLEBORG T440		0077470
710/55-34 20PR 167/A8 TRELLEBORG T440		0079303
750/55-26.5 24PR 182/A8 TRELLEBORG T440		0080483
600/65-34 T440SB 163A8/20PR TRELLEBORG T440		0080617



TRELLEBORG TWIN FORESTRY T480		
710/45-26.5 20PR 168/A8 TRELLEBORG T480		0076980
710/45-26.5 24PR 173/A8 TRELLEBORG T480		0076981
750/55-26.5 24PR 182/A8 TRELLEBORG T480		0077027
600/55-26.5 20PR 165/A8 TRELLEBORG T480		0077473



NOKIAN FOREST KING F		
710/45-26.5 20PR NOKIAN FOREST KING F2		0073930



NOKIAN FOREST KING TRS2		
710/45-26.5 20PR NOKIAN FOREST KING TRS2		0073697
600/55-26.5 20PR NOKIAN FOREST KING TRS2		0074603
800/40-26.5 20PR NOKIAN FOREST KING TRS2		0075272
750/55-26.5/24 NOKIAN FOREST KING TRS2		0076116
710/40-22.5/20 NOKIAN FOREST KING TRS2		0076421
600/50-22.5/20 NOKIAN FOREST KING TRS2		0077650



NOKIAN FOREST KING F2		
780/50-28.5 24 NOKIAN FOREST KING F2		0072734
710/45-26.5 20PR NOKIAN FOREST KING F2		0073930
710/45-26.5 24PR NOKIAN FOREST KING F2		0074327
600/55-26.5 20PR NOKIAN FOREST KING F2		0074597
750/55-26.5 24PR NOKIAN FOREST KING F2		0074610
800/40-26.5 20PR NOKIAN FOREST KING F2		0076112
710/40-22.5/20 NOKIAN FOREST KING F2		0076413
600/50-22.5/20 NOKIAN FOREST KING F2		0079683
710/40-24.5 20PR T445572 FOREST KING F2 SF TT		0081887



NOKIAN RIDER		
600/55R26.5 165 A8/172 A2 Rider		0066979
650/45R24.5 161 A8/168 A2 Rider		0067220
600/65R34 165 A8/172 A2 Rider		0068393
800/50R26.5 180 A8/187 A2 Rider		0070461



NOKIAN NORDMAN FOREST F		
710/45-26.5 20 T445565 NORDMAN FOREST SF TT		0075120
600/55-26.5 20 T445598 NORDMAN FOREST F SF TT		0076384
750/55-26.5 20 T445597 NORDMAN FOREST F SF TT		0076385
710/40-22.5 16PR T445625 NORDMAN FOREST F		0078931



ALLIANCE 342		
710/55R34 171A8/178A2		0075554



ALLIANCE 343		
710/40-22.5 16 PR		0082553
710/45-26.5 20 PR		0075549
750/55-26.5 20 PR		0075553
800/40-26.5 20 PR		0082554



NOKIAN NORDMAN FOREST TRS L-2		
710/45-26.5 20 NORDMAN FOREST TRS L-2 SF		0076387
700/70-34 20 NORDMAN FOREST TRS L-2 SF TT		0076418
600/65-34 20 NORDMAN FOREST TRS L-2 SF TT		0077167
710/40-22.5/16 NORDMAN FOREST TRS L-2 SF T		0079072



NORDMAN FOREST TRS L-2 SF TT		
710/40-22.5/16		0079072
750/55-26.5 PR20 Nokian Forest King TRS 2		0076116



ALLIANCE 344		
600/50-22.5 16 PR		0075695
710/40-22.5 16 PR		0075696
710/45-26.5 20 PR		0075552
750/55-26.5 20 PR		0080194
600/55-26.5 20 PR		0082049
800/40-26.5 20 PR		0070549



TIANLI		
710/45-26.5-20 FF(ST)		0079134



## PONSSE WHEEL CHAINS

PONSSE chains are assembled manually and manufactured from high-quality materials with special emphasis on uniform hardness and tensile strength. In addition, extensive testing and practical experiences have shown that PONSSE chains endure more wear, resulting in a longer service life.

PONSSE VIKING WHEEL CHAINS



PONSSE VIKING WHEEL CHAINS, TRIPLE PATTERN



## OFA CHAINS

OFA stands for the green chains of the former Ovako brand, well-known to quality-conscious consumers. All OFA chains are manufactured from case-hardened boron steel. You can easily install and remove them all by yourself. The chains provide excellent grip, and they protect the wheels against external damage. OFA chains are available for all common wheel sizes.

OFA MATTI W DOUBLE PATTERN



OFA MATTI W TRIPLE PATTERN



### MATTI W

The extra dense pattern of Matti W offers excellent protection against external damage. The chains are designed to withstand extreme use in demanding conditions, such as in ploughing. Available in thicknesses of 13 mm, 16 mm and 19 mm, depending on the wheel size.

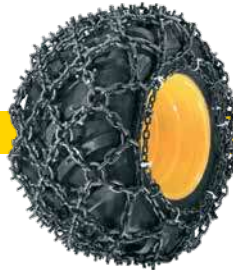
## TELLEFSDAL U-GRIP CHAINS

The U-Grip chain has a unique structure, with a "U" stud welded under the flat-lying chain links. The studs on the vertical links, together with the "U" studs, guarantee the best grip on the market. The triple-pattern model also includes a very dense sideways protection.

TELLEFSDAL DOUBLE PATTERN



TELLEFSDAL TRIPLE PATTERN



## NORDCHAIN CHAINS



NORDCHAIN METSÄ-ÄSSÄ 130



NORDCHAIN SUPERHOKKI 160

Superhokki 160 is an excellent, low-cost friction chain for anyone who needs excellent grip. The firm 19 mm U-studs ensure steady progress.

16 mm basic chain | 19 mm U-studs and connecting links



SUPERHOKKI 160TS

Superhokki 160TS is the most popular NordChain forest machine chain. Its excellent grip with 19 mm U-studs, long service life and zigzag side chain pattern protect wheels against damage caused by rocks and stumps. A tension chain comes as standard.

16 mm basic chain | 19 mm U-studs and connecting links



NORDCHAIN VERKKOKETJU 130



NORDCHAIN MEGAHOKKI 160

Megahokki chains include not only a large number of U-studs, but also double studs with two U-studs welded together from their sides. The combination of two different stud models produces maximum wheel grip and increases the chain's tractive force.



MULTIHOKKI 160TS

Multihokki 160TS is an advanced version of the Superhokki chain. It has more studs to protect the wheel better, also in rocky terrain. In addition to wide 19 mm U-studs, vertical links also include 19 mm studs. The dense side pattern protects the tyre wall against sharp rocks and stumps. Case-hardened boron steel guarantees high wear resistance. A tension chain comes as standard, delivered painted blue.

16 mm basic chain | 19 mm U-studs and connecting links



## FRAM FORESTRY CHAINS



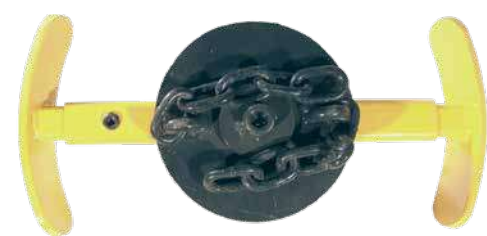
FRAM FORESTRY DOUBLE PATTERN

## CHAIN MOUNTING TOOLS AND ACCESSORIES



### CHAIN LINKS

16 mm chain link PONSSE	0028720
13 mm chain link OFA	0062119
16 mm chain link OFA	0028720
Chain link pin	00287201



### CHAIN HOLDERS

22.5	0064359
26.5	0064360



### CHAIN HOLDERS

22.5	0064922
26.5	0064923



### WHEEL CHAIN MOUNTING TOOLS

Wheel chain tensioner Have	0063217
Chain pin extractor	0063734



### CHAIN HOLDERS

22.5, 10-bolt	0066790
26.5	0066788
26.5, Low hub. Height 175 mm	0066789
34	0066815

# WE EXIST FOR OUR CUSTOMERS



It is often more productive to bring the maintenance to the machine than to bring the machine in for maintenance. PONSSE Field Maintenance only employs seasoned professionals, whose ability to quickly solve problems at the logging site is the best in the game. Their well-equipped maintenance vehicle has all the tools they need to ensure the work can be carried out quickly and smoothly at the site. When we fix machines, we are ultimately helping a friend, the machine owner or the operator. The faster the machine is operational again, the better the results are on your balance sheet.



## OLOFSFORS TRACKS



### EVO

**EVO** is one of the most popular track models for forest machines. The triangular cross member shape towards the wheel offers excellent grip. The shape also prevents dirt and snow from packing between the wheel and cross member. The combination of a cross member and a sturdy cleat produces excellent grip on all surfaces.

The upper surface of the cross member has been pressed level from three points to strengthen the structure. Cleats can be welded on the outermost levels, making it easy to install new cleats.

**EVO Soft** shows its mettle in locations where tracks need to offer not only excellent grip and high tractive force, but also excellent flotation.

**EVO M** is a track solution for larger forwarders and demanding sites. In EVO M, cross members are evenly distributed thanks to the specially dimensioned link system. There are roughly 20% more cross members than in our other track models.

**EVO M Soft** is a forest machine track designed for large machines and heavy-duty activities.



### ECO

**Eco** is an all-purpose track. It is ideal for most surfaces, round the year.

**Eco Soft** is an advanced model. The ends of the Soft cross members extend outside the side links, and they have been designed to be terrain-friendly.



### BALTIC

**Baltic** is a track model ideal for sensitive terrain and thinning sites. The wide cross members, rounded towards the wheel from their long side, keep the mat of logging residues left on the trail by a multi-purpose machine intact, even after several rounds.

**Baltic Soft** tracks have cross members extending outside the linkage system, making this model ideal for terrain where extreme flotation is required, without damaging the ground, even when turning.



### KOVAX

**KovaX** is the latest all-purpose track model from Olofsfors for use round the year. The two low grip brushes in the KovaX cross member profile enable good grip and minimise soil disturbance. The pressed inner fastening ensures good wheel grip and the rugged cleat enhances forward motion and gives excellent lateral holding.

**KovaX Soft** cross members have been designed to be terrain-friendly, and the two-brush cross members, bent from their heads, significantly increase flotation and stability.

**KovaX M** tracks have roughly 20% more cross members than the regular model. The larger cross member improves flotation, leaves fewer marks in the terrain and increases fuel economy.

**Kovax M Soft**, with its large number of cross members and the Soft cross member length and shape, is a good all-purpose track.



### EX

**EX** tracks guarantee excellent progress both in steep slopes and in deep snow. The high cross members offer excellent traction in dirt and deep snow, without any dirt or snow packing between the wheel and cross members.

EX cross members are narrow in the middle and wide at the ends, increasing flotation.



### U

**U tracks** have a U-shaped cross member profile. The tracks are ideal for sites requiring high flotation and tractive force.

**U Soft** tracks work best in soft terrain and steep slopes. The long Soft cross members also protect tyre walls, side links and the ground.



### OF

**OF** tracks are at their best in steep and rocky terrain. They also offer excellent performance in dirt and snow. The OF cross member profile, narrowing towards the wheel, provides good grip. The small contact surface with the wheel and the 50-mm-high cross members make OF tracks a popular model for snowy conditions.

**OF Soft** enables high wheel and terrain grip. The long and bent cross member heads increase flotation and protect the tyre wall, side links and the ground.

**OF M** tracks are designed for the largest forwarders and the most demanding tasks. There are roughly 20% more cross members than in our other track models.

**OF M Soft** is a forest machine track designed for large machines and heavy-duty activities.



### COVERX

**CoverX** is the latest addition to the Olofsfors track range, designed specifically for harvesting in terrain without any snow cover. The design of CoverX offers excellent grip between the tracks and the ground, as well as between wheels and the tracks. Grip between the tracks and the ground is produced by the cross members, designed to be on separate levels, including a 30-mm-high traction surface. Grip between wheels and the tracks is produced by the curved inner design, conforming to the shape of the wheel surface.

**CoverX Soft** – straight cross members, combined with a curved inner design, conforming to the shape of the wheel surface, and extra-long side guides, make CoverX Soft tracks an excellent all-purpose choice for harvesting in summer.

**CoverX M** is the best choice for machines, in which the cross member length cannot be increased, but which require maximum flotation, without increasing the total machine width.

**CoverX M Soft**, with its long cross members, is the best choice for conditions, in which the surface pressure must be as low as possible, such as in peatlands. The tracks are ideal for harvesting in terrain without any snow cover.

## OLOFSFORS TRACKS

Wheel		All-purpose track / thinning track		High-flotation track		Slope track / high-traction track		
Model	Size	Bogie [cc]	No.	Model	No.	Model	No.	Model
Nokian FKF2	710/45-26.5	1,500 mm	0077313	KovaX		CoverX	0065563	OF
Nokian FKF2	710/45-26.5	1,500 mm (rear bogie)	0077312	KovaX	0080234	CoverX	0083379	OF
Nokian FKF2	710/45-26.5	1,690 mm (Bison rear bogie)	0081455	KovaX	0081456	CoverX	0082108	OF
Nokian FKF2	710/45-26.5	1,890 mm (long bogie)	0080825	KovaX		CoverB		OF
Nokian FKF2	750/55-26.5	1,690 mm		KovaX		CoverX	0076537	Evo
Nokian FKF2	780/50-28.5	1,690 mm		KovaX		CoverX		Evo
Nokian TRS2	710/45-26.5	1,500 mm	0079684	KovaX		CoverX	0080133	OF
Nokian TRS2	710/45-26.5	1,500 mm (rear bogie)	0079687	KovaX		CoverX	0080133	OF
Nokian TRS2	710/45-26.5	1,690 mm (Bison rear bogie)		KovaX		CoverX		OF
Nokian TRS2	710/45-26.5	1,890 mm (long bogie)		KovaX		CoverB		OF
Nokian TRS2	750/55-26.5	1,690 mm		KovaX		CoverX	0075709	Evo
Nokian TRS2	780/50-28.5	1,690 mm		KovaX		CoverX		Evo
Trelleborg T480	710/45-26.5	1,500 mm	0077313	KovaX		CoverX	0065563	OF
Trelleborg T480	710/45-26.5	1,500 mm (rear bogie)	0077312	KovaX	0080234	CoverX	0083379	OF
Trelleborg T480	710/45-26.5	1,690 mm (Bison rear bogie)	0081455	KovaX	0081456	CoverX	0082108	OF
Trelleborg T480	710/45-26.5	1,890 mm (long bogie)	0080825	KovaX		CoverB		OF
Trelleborg T480	750/55-26.5	1,690 mm		KovaX		CoverX	0075709	Evo
Trelleborg T480	780/50-28.5	1,690 mm		KovaX		CoverX		Evo
Trelleborg T440	710/45-26.5	1,500 mm	0079684	KovaX		CoverX	0080133	OF
Trelleborg T440	710/45-26.5	1,500 mm (rear bogie)	0079687	KovaX		CoverX	0080133	OF
Trelleborg T440	710/45-26.5	1,690 mm (Bison rear bogie)		KovaX		CoverX		OF
Trelleborg T440	710/45-26.5	1,890 mm (long bogie)		KovaX		CoverB		Evo
Trelleborg T440	750/55-26.5	1,690 mm		KovaX		CoverX		Evo



# CLARK TRACKS



## TERRA85

Terra85 is an all-purpose track for year-round use. Cross members include a high-grip double brush, which guarantees grip and flotation. The low track profile minimises vibration while driving.

- The low cross member profile reduces vibration directed at the operator.
- Arguably the best multi-terrain tracks on the market
- Use all year round, also in snow
- Special heat treatment for cold weather durability
- Cleat size: 50 × 32 × 40 mm, one cleat per cross member



## FX

FX tracks are based on the Terra95 multi-purpose tracks. FX tracks are designed for larger forwarders, offering very high wear resistance. The large double cleats in every cross member ensure a long service life compared with regular cleats. FX tracks are excellent in rocky and hard terrain where tracks require a long service life.

- Sturdy cross member, combined with solid cleats
- First-rate grip and flotation
- Ideal for earth-moving machines
- Ideal for rocky conditions
- Extended track pads as standard to protect the side linkage system
- Cleat size: Rocky 75 mm, two cleats per cross member



## TXL

TXL tracks produce the best grip and flotation and the lowest damage to the terrain in soft peatlands. Symmetrical and asymmetrical extensions are available at widths requested by our customers, enabling harvesting in the softest and most sensitive terrain because of minimal surface pressure. Standard widths of TXL tracks are 930 mm and 1,000 mm. Both widths are available in symmetrical and asymmetrical models. Ask your retailer or our technical support for more information.

- Advanced flotation tracks
- Absorbing profile guarantees maximum flotation and a high tractive force
- Suitable for all sizes of forest machines
- Minimised damage when driving on forest roads (without cleats)
- Minimised damage to the terrain
- Different widths available for different wheel and frame combinations
- The lowest surface pressure in our range
- Cleat size: 50 × 32 × 40 mm, one cleat per cross member



## TXCL

TXCL tracks are a combination of high-flotation TXL tracks and Terra85 multi-purpose tracks. This enables a better grip when climbing than the original TXL tracks. TXCL tracks are excellent in very soft terrain and on slopes.

- Higher tractive force than in the TXL model
- Wider cross member spacing than in the TXL model for easier cleaning. TXCL tracks should not be used in snowy conditions.
- Cleat size: 50 × 32 × 40 mm, one cleat per cross member



## TERRA95

Terra95 is an heavy-duty all-purpose track for larger forwarders and demanding rocky conditions. The large cross member area, combined with the 28 mm side linkage system, guarantees a long service life.

- Arguably the best multi-terrain tracks in its class on the market
- Recommended for more than 14-ton forwarders and demanding harvesting conditions
- The low cross member profile reduces vibration directed at the operator.
- The square profile does not wear, and the absorbing surface guarantees good grip in all conditions
- Use all year round, also in snow
- Ideal for earth-moving machines
- Ideal for rocky conditions
- Cleat size: 50 × 32 × 50 mm, one cleat per cross member



## ATF

ATF tracks are designed for soft peatlands and winter conditions. The side linkage system of ATF tracks are wider and the middle of cross members is very narrow, making the tracks easy to clean of mud and snow. The pinched mid-section of the cross members guarantee grip and flotation.

- Recommended for mushy conditions, peatlands, snow and ice
- Uprturned cross member edges protect tree roots and make the machine easier to turn
- Cleat size: 50 × 32 × 60 mm, one cleat per cross member



## TXFX

TXFX are heavy-duty combination tracks for large forest machines. TXFX tracks are equipped with high-flotation TXL cross members and sturdy FX multi-purpose cross members. TXFX tracks are suitable for soft peatlands requiring flotation and grip on steep slopes.

- Higher tractive force than in the TXL model
- Wider cross member spacing than in the TXL model for easier cleaning. TXFX tracks should not be used in snowy conditions.
- Cleat size: 50 × 32 × 70 mm, two cleats per TXL cross member; Rocky 75 mm, two cleats per FX cross member



## TXGL

TXGL tracks combine the best properties of TXL and Grouzer (GL) tracks. This combination is excellent in wet peatlands and on steep slopes.

- Maximum grip and climbing capacity compared with TXL tracks.
- Wider cross member spacing than in the TXL model for easier cleaning. TXGL tracks should not be used in snowy conditions.
- Cleat size: 50 × 32 × 50 mm, one cleat per TXL cross member; 50 × 25 × 40 mm, one cleat per GL cross member



## CLARK TRACKS



### FL15

High-flotation FL15 tracks are designed for harvesters and small and medium-sized forwarders. The low surface pressure and good grip help to keep productivity high in soft peatlands.

- Wide and close-spaced flotation cross members offer a low surface pressure.
- The bent and absorbing cross member profile guarantees good grip.
- Cleat size: 50 × 32 × 50 mm, one cleat per cross member



### SFL15

SFL15 is a wider version of FL15 tracks. Upturned cross member heads extending outside the side linkage system protect the ground and are terrain-friendly, especially at thinning sites and on softwood mats. SFL15 is ideal for small and medium-sized forest machines.

- Symmetrically upturned cross members offer good grip
- Upturned cross member edges protect tree roots
- The machine is easy to turn
- Cleat size: 50 × 32 × 50 mm, one cleat per cross member



### GROUZER

Grouzer multi-purpose tracks offer good grip, especially on slopes. These tracks are ideal for nearly all machine models and terrain types.

- The Grouzer cross member profile guarantees good grip and progress in nearly all conditions.
- Multi-purpose tracks for use around the year
- Ideal for slopes
- Cleat size: 50 × 25 × 40 mm, one cleat per cross member



### CS

CS tracks are based on Grouzer tracks. Traction is maximised through the addition of wide cleats to the middle of cross members and long cleats to the edges. These tracks are designed for safe harvesting on steep slopes.

- Aggressive cleats ensure good grip on steep slopes
- Maximised traction
- Cleat size: two 50 × 25 × 100 mm cleats in every other cross member; 50 × 25 × 70 mm + 50 × 25 × 100 mm cleats in every other cross member



### CX

CX tracks are designed for extreme slopes. Cross members are equipped with very wide cleats to guarantee maximised grip on very steep and demanding slopes.

- Aggressive cleats ensure good grip on steep slopes
- Maximised traction
- Cleat size: 50 × 25 × 100 mm, two cleats per cross member



### ROCKY

Rocky tracks are ideal for slopes and rocky terrain. The tracks are also suitable for mushy conditions, as the wide-spaced cross member pattern is easy to clean. Rocky tracks are at their best in snowy conditions, especially in deep snow.

- The absorbing square cross member profile guarantees good grip
- Suitable for steep slopes
- Good properties in snowy conditions
- Cleat size: 50 × 32 × 40 mm, one cleat per cross member



### TXSG

TXSG high-flotation tracks are designed for harvesters. These tracks minimise the surface pressure and maximise flotation.

- Flotation on soft peatlands
- Cleat size: 50 × 32 × 40 mm, two cleats in every other cross member, three cleats in every other cross member



### GSG

Grouzer Super Grip (GSG) tracks are designed for slopes and especially for six-wheel forest machines. Low-maintenance GSG tracks ensure good grip.

- Maximum grip and low maintenance
- Cleat size: 50 × 25 × 40 mm, two cleats in every other cross member, three cleats in every other cross member

## CLARK TRACKS

Wheel		All-purpose track / thinning track		High-flotation track		Slope track / high-traction track		
Model	Size	Bogie (cc)	No.	Model	No.	Model	No.	Model
Nokian FKF2	710/45-26.5	1,500 mm	0081671	TL-85	0078783	TXL	0085764	Grouzer
Nokian FKF2	710/45-26.5	1,690 mm (Bison rear bogie)	0081454	TL-85	0085749	TXL	0085768	Grouzer
Nokian FKF2	710/45-26.5	1,890 mm (long bogie)	0081686	TL-85	0085753	TXL	0085772	Grouzer
Nokian FKF2	750/55-26.5	1,690 mm	0081622	TL-95	0081881	TXL	0085776	Grouzer
Nokian FKF2	780/50-28.5	1,690 mm	0083000	TL-95	0085761	TXL	0085782	FXT
Nokian TRS2	710/45-26.5	1,500 mm	0081805	TL-85	0085538	TXL	0081912	Grouzer
Nokian TRS2	710/45-26.5	1,690 mm (Bison rear bogie)	0085734	TL-85	0085750	TXL	0085769	Grouzer
Nokian TRS2	710/45-26.5	1,890 mm (long bogie)	0085739	TL-85	0085754	TXL	0085773	Grouzer
Nokian TRS2	750/55-26.5	1,690 mm	0082788	TL-95	0085757	TXL	0085778	Grouzer
Nokian TRS2	780/50-28.5	1,690 mm	0085744	TL-95	0085762	TXL	0085783	FXT
Trelleborg T480	710/45-26.5	1,500 mm	0085730	TL-85	0085747	TXL	0085765	Grouzer
Trelleborg T480	710/45-26.5	1,690 mm (Bison rear bogie)	0085736	TL-85	0085751	TXL	0085770	Grouzer
Trelleborg T480	710/45-26.5	1,890 mm (long bogie)	0085740	TL-85	0085755	TXL	0085774	Grouzer
Trelleborg T480	750/55-26.5	1,690 mm	0083282	TL-95	0085759	TXL	0085779	Grouzer
Trelleborg T480	780/50-28.5	1,690 mm	0085745	TL-95	0085763	TXL	0085784	FXT
Trelleborg T440	710/45-26.5	1,500 mm	0085732	TL-85	0085748	TXL	0085766	Grouzer
Trelleborg T440	710/45-26.5	1,690 mm (Bison rear bogie)	0085738	TL-85	0085752	TXL	0085771	Grouzer
Trelleborg T440	710/45-26.5	1,890 mm (long bogie)	0085741	TL-85	0085756	TXL	0085775	Grouzer
Trelleborg T440	750/55-26.5	1,690 mm	0085742	TL-95	0085760	TXL	0085780	Grouzer



## YELLOW TRACKS



### YELLOWTRACK MULTI

The profile design offers excellent traction and stability on different surfaces. The profile is ideal for steep and rocky conditions, as well as mud and snow.

#### Applications

- Demanding and rocky conditions
- Mud and snow

#### Product features

- Optimal grip in different terrain types
- Tread design enables maximum grip between wheels and tracks
- The structure enables automatic cleaning while driving
- Heat-treated material, reducing track wear



### YELLOWTRACK GROOVE

The special profile design offers excellent traction and stability on different surfaces. The profile is ideal for steep and rocky conditions, as well as mud and snow.

#### Applications

- Demanding and rocky conditions
- Mud and snow

#### Product features

- Optimal grip in different terrain types
- Tread design enables maximum grip between wheels and tracks
- The structure enables automatic cleaning while driving
- Heat-treated material, reducing track wear



### YELLOWTRACK EXTREM

Designed for the most demanding of conditions. The profile design offers excellent traction and stability on steep slopes and continuous traction between wheels and tracks.

#### Applications

- Demanding and rocky conditions
- Treads designed for the steepest slopes

#### Product features

- Optimal grip in hard and rocky terrain
- Tread design enables maximum grip between wheels and tracks
- The structure enables automatic cleaning while driving
- Heat-treated material, reducing track wear



### YELLOWTRACK SOFT

The profile design offers a large contact surface against the ground and, therefore, excellent traction and stability in soft and marshy conditions. The profile minimises impact on the ground.

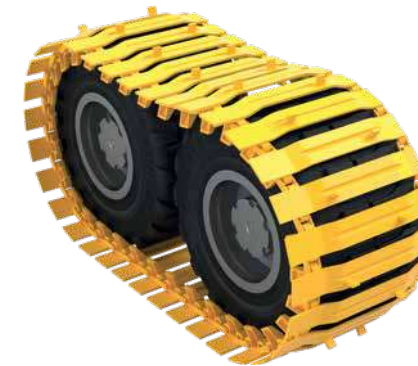
#### Applications

- Soft and marshy conditions
- For conditions where impact on the environment and vegetation needs to be minimised

#### Product features

- Optimal grip in different terrain types
- Treads have been designed to minimise impact on the ground
- Tread design enables maximum grip between wheels and tracks
- The structure enables automatic cleaning while driving
- Heat-treated material, reducing track wear

## YELLOW TRACKS



### YELLOWTRACK MEGA

The MEGA profile is an improved version of the SOFT profile. It is designed for conditions where a larger track surface is required – very marshy conditions and conditions where machine stability is a must.

#### Applications

- Soft and marshy conditions
- For conditions where impact on the environment and vegetation needs to be minimised

#### Product features

- Optimal grip in different terrain types
- Treads have been designed to minimise impact on the ground
- Tread design enables maximum grip between wheels and tracks
- The profile can be extended on both sides
- The structure enables automatic cleaning while driving
- Heat-treated material, reducing track wear

## KOPA TRACKS

Forest machine tracks designed for soft terrain and for working during the spring thaw. The unique structure of the KOPA high-flotation tracks creates unprecedented flotation.

### KOPA TRACKS

Tracks 710/45-26.5-900C1-64A KOPATracks 28MM 900MM FKF2,FKF,ELS L-2	0085529
Tracks 710/45-26.5-900C1-64C KOPATracks 28MM 900MM FKF2,FKF,ELS L-2	0085530
Tracks 710/45-26.5-900HDC1-64A KOPATracks 28MM 900MM FKF2,FKF,ELS L-2	0085531
Tracks 710/45-26.5-900HDC1-64C KOPATracks 28MM 900MM FKF2,FKF,ELS L-2	0085532
Tracks 710/45-26.5-1000HDC2-64A KOPATracks 28MM 1000MM FKF2,FKF,ELS L-2	0085533
Tracks 710/45-26.5-1000HDC2-64C KOPATracks 28MM 1000MM FKF2,FKF,ELS L-2	0085534
Tracks 710/45-26.5-1000HDC2-70 (EB) KOPATracks 28MM 1000MM FKF2,FKF,ELS L-2	0085535
Tracks 710/45-26.5-800C-64A KOPATracks 28MM 800MM FKF2,FKF,ELS L-2	0085536

## OFA TRACKS



### OFA SISU

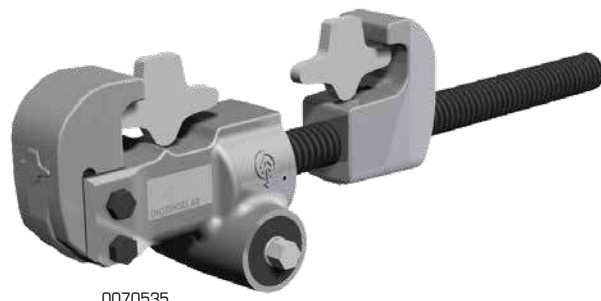
An all-purpose track with great grip for all conditions and seasons.

- The robust cross-member is sturdier than in any other product on the market, which also makes the tracks suitable for use in larger machines.
- Manufactured from hard and tough boron steel, which is a good fit for use in tracks.
- Available for 710, 750 and 780 Nokian Forest King F2 tyres.
- Colour: grey





## TRACK MOUNTING TOOLS



0070535



0084276

### OLOFSFORS TRACK TENSIONER

Track tensioner with a gearbox. Track tension case and jaws for your track. The track is tensioned with a power drill with a maximum torque of 14 Nm. The track tension case includes the track tensioner with a gearbox, a cleaning brush, grease and bolts. The jaws and the extension must be ordered separately.

Description	Item	No.
Track tension case		0070535
Tensioner tool		0084851
Jaw	ECO-track/Soft	0083866
Jaw	OF/MAX	0083867
Jaw	Baltic/Magnum	0083868
Jaw	U	0083869
Jaw	EVO/EVO-M	0083870
Jaw	EX	0083871
Jaw	KovaX	0083872
Jaw	CoverX	0083873
Mounting bracket		0069913



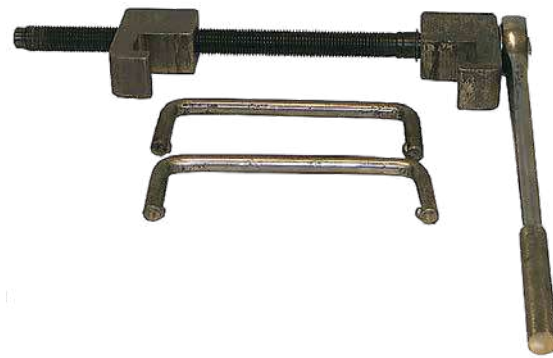
### OLOFSFORS TRACK TENSIONERS

Eco-Track/Soft	0061822
Eco-OF/Max	0061823
Eco-U/Wide	0058348
Eco-Baltic/Magnum	0061826
ECO-Max-Magnum	0067120
Mixed track	0061825
Eco-EVO	0070323

### OLOFSFORS TRACK TENSIONER (HAND-OPERATED)

Tensioning tool and jaws for your track.

Description	Item	No.
Tensioning tool	All jaws below	0084276
Jaw	ECO-Track	0084277
Jaw	OF	0084278
Jaw	Baltic	0084279
Jaw	U	0084280
Jaw	KovaX	0084281
Jaw	EVO	0084282
Jaw	EX	0084283
Jaw	CoverX	0084284



### TRACK TENSIONERS

Track tensioner Eco-Track, Eco-Soft, Eco-Of, Eco-Max, Eco-Baltic, Pro-Track, Mixed track	ST0292
--	--------

### CLARK TRACK TENSIONERS

All models	0072110
------------	---------

### HAVEL TRACK TENSIONERS

Mechanical	ST0351
Hydraulic	ST0352

## TRACK ACCESSORIES



0028712



0067971



0028704



0067972



0081901



0076566

### OLOFSFORS TRACK LOCKS AND CLEATS

Track locks and weld-on cleats for the following track types

Description	No.
Track lock, 22 × 90 mm	0028712
Track lock, 22 × 135 mm	0028704
Track lock, 22 × 185 mm	0081901
Track lock, 26 × 105 mm	0067971
Track lock, 22 × 155 mm	0067972
Track lock, 26 × 205 mm	0076566
Track lock, 28 × 125 mm	0081996
Track lock, 28 × 175 mm	0081997
Track lock, 28 × 225 mm	0081152
Track lock extender, $\varnothing$ 22 mm, 100 × 50 × 40	00287121
Track lock extender, $\varnothing$ 26 mm, 120 × 50 × 45	00679711
45 × 20 × 27	0064798
65 × 50 × 25	0067627
45 × 35 × 20, ECO, EX	0064705
50 × 30 × 35, OF	0072429
50 × 30 × 50, EVO, KovaX Baltic PRO	0080921
45 × 20 × 30	0082669
50 × 30 L = 35	0079707
<b>Sets</b>	
45 × 35 × 20, ECO, EX, 80 pcs	006470580
50 × 30 × 50, EVO, KovaX Baltic PRO, 80 pcs	008092180

### KOPA TRACK LOCKS

KOPA track lock, 28 × 115 mm	0085539
KOPA track lock, 28 × 152 mm	0085540
KOPA track lock, 28 × 183 mm	0085190
Track tensioner pair, Kopa flotation track, Standard	0085517
Track tensioner pair, Kopa flotation track, Multi	0085548



0083524

### CLARK TRACK LOCKS AND ACCESSORIES

Track locks and weld-on cleats for the following track types

Description	No.
24 × 95 mm	00625541
24 × 160 mm	0070470
28 × 105 mm	0071248
28 × 160 mm	0071249
50 mm × 32 mm × 60 mm Terra85, Terra95, Rocky, ATF, S/SL-15, TXL, TXCL	0081740
50 mm × 32 mm × 40 mm Terra85, Terra95, Rocky, ATF, S/SL-15, TXL, TXCL	0071053
Weld-on track cleats 710-45-26.5 Terra85, Terra95, Rocky, TXL, TXCL, 50 mm × 32 mm × 40 mm, 64 pcs	0083524
Track tensioner for a standard track without extensions	0072110
Track tensioner for a track with extensions	0083897

### TRACK LINK OLOFSFORS

22 × 49.5 × 51.5	0067969
26 × 51 × 55	0067970
Mixed track	0067175
Mixed track	0067176
45 × 15 × 132/80 Eco-Track	0069154
45 × 18 × 150/80 Baltic track	0071448
45 × 15 × 150, all Olofsfors tracks with 22 mm side links	0072463

### TRACK LINK CLARK

JL-24-95	00625541
JL-24-160	0070470
JL-28-105	0071248
JL-28-160	0071249

### WELD-ON TRACK CLEATS

45 × 20 × 27	0064798
45 × 35 × 20	0064705
45 × 35 × 20, track cleat set, 80 pcs	006470580
50 × 30 × 35 EVO	0072429
65 × 50 × 25	0067627
50 × 40 × 32 CLARK	0071053
Track joint bolt	0068786
Eco-Track extension, weld-on	0071657





# HARVESTER PARTS

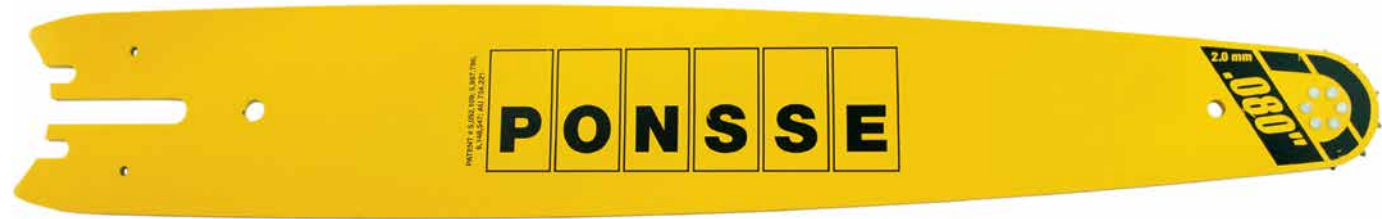
Our range of harvester wearing parts has grown again. For example, our selection of feed rollers is now more extensive. The LOGGER'S product line has entered the saw chain and saw bar market; the line is affordable but still high in quality and very popular.

Saw bars, chains and accessories.....	58	Stump treatment.....	64
Sharpening angles.....	61	Feed rollers.....	65
LOGGER's saw bars and saw chains.....	62	Delimiting knife covers.....	67





# SAW BARS, CHAINS AND ACCESSORIES



SAW BARS							
Chain type	Base	Saw bar length	Note:	Sprockets	Ponsse	GB	Oregon
2.0 mm	Wide	64 cm		13-15	0065974	0079506	0028622
2.0 mm	Wide	75 cm		13-15	0065970	0078182	0028604
2.0 mm	Wide	75 cm		16-17	0065970	0078182	0028604
2.0 mm	Wide	80 cm		13-15			0061448
2.0 mm	Wide	64 cm	UREA	13-15	0066675		00286262
2.0 mm	Wide	64 cm	UREA	16-17	0066675		00286262
2.0 mm	Wide	75 cm	UREA	13-15	0066673	0077520	00286282
2.0 mm	Wide	75 cm	UREA	16-17	0066673	0077520	00286282
2.0 mm	JET-FIT	75 cm		16-17	0065972	0077522	0061207
2.0 mm	JET-FIT	82 cm		13-15			0061956
2.0 mm	JET-FIT	82 cm		16-17	0065971	0078574	0060709
2.0 mm	JET-FIT	82 cm	UREA	16-17	0066674	0078573	0061833
2.0 mm	Narrow	64 cm		9-12			0028634
2.0 mm	Narrow	75 cm		9-12			0028635
2.0 mm	Top wheels						0036752



SPEEDMAX SAW BARS					
Chain type	Base	Saw bar length	Note:	Sprockets	Item
2.0 mm	JET-FIT	75 cm		15-16	0081143
2.0 mm	Wide	75 cm		14-15	0080960 use 18HX chain
2.0 mm	JET-FIT	75 cm		14-15	0080963 use 18HX chain
2.0 mm	JET-FIT	82 cm		15-16	0081146
2.0 mm	JET-FIT	82 cm		14-15	0080964 use 18HX chain
2.0 mm	JET-FIT	90 cm		15-16	0081147
2.0 mm	Top wheel				0078701
2.0 mm	Rivet set				0078870



SPROCKETS				
Number of teeth	Ponsse	GB	Oregon	Open wheel
9		(3/4" chain) 0065688		0044349
10			0036755	0044350
11			0036747	0044353
12			0036748	0044352
13	*P32444	0061871		0044351
14	*P11710	0061874		
15		0061872	0061872	
16	P13252			
17	230713	0061873		

\* Mushroom model (chain tensioner + small saw motor)



SAW BAR FASTENING	
Threaded bolt for regular saw bar	P19842
Threaded bolt for Jet-Fit saw bar	P26317
Jet-Fit stop screw	231069
Nordlock	0060177
Normal low nut	0058402
New thicket nut	0064810

REPAIR SPARE PART KITS	
Repair Spare Part Kit 3723971, Parker	0085364
Repair Spare Part Kit 3721949, Parker	0085152





**COMPLETE CHAINS**

Chain links	No.
-------------	-----

**PONSSE HX**

76	0067863
77	0067884
78	0067864
79	0067885
87	0067886
88	0067865
89	0067887
90	0067888
97	0067867

**OREGON 2.0 MM**

76	00390731
86	0066485
87	00390732
89	00390733

**STIHL 2.0 MM**

76	0064745
77	0065243
78	0064746
86	0062089
87	0062088
88	0065244
89	0062547
90	0062749
94	0062087
95	0064747
100	0066488



**CHAIN ROLLERS**

Description	No.
-------------	-----

**PONSSE**

2.0 mm HX	0067866
-----------	---------

**OREGON**

2.0 mm HX	0039073
-----------	---------

**STIHL**

2.0 mm	0061425
--------	---------



**CHAIN LINKS**

Description	No.
-------------	-----

**OREGON 1.6 MM**

Male	0043980
Female	0043990

**OREGON 2.0 MM**

Male	0061130
Female	0066910

**OREGON HX18**

Male	0066563
Female	0066910

**STIHL 1.6 AND 2.0 MM**

Male	0064174
Female	0064174

**STIHL MAGNUM**

Male	0064878
------	---------



0082972



0082973



0082974

**DRIVE SPROCKET KIT**

A drive sprocket kit for Bucher and Parker saw motors. A fastener kit is also available.

Bucher	0082972
Parker	0082973
Fasteners for JET-FIT	0082974



0070509



0043951



0039074

**SAW CHAIN MAINTENANCE**

Chain sharpener 220 V	0043950
Sharpener, hydraulic quick-coupling	0057914
Automatic sharpener	0067133
Chain breaker	0044340
Chain breaker anvil	0060974
Rivet tool	0044330
Rivet tool anvil	0043996
Die/tip	0039074
Shaping tool for a sharpening wheel	0071421
Grinding stone	0071482
Arm return spring	0043951
Arm return spring	0070509
Grinding wheel, 145 × 4.7 × 22 32660	0028747
Grinding wheel, 145 × 7.9 × 22.3 32902	0067084
Grinding wheel, 32660P/N, 145 × 4.7 × 22.2 OREGON	0070014
Grinding wheel, 150 × 4.7 × 16 BLACK	0071611
Grinding wheel, 150 × 4.0 × 16 WHITE	0067134
Grinding wheel, CBN148/16 DIAMOND	0071612
Grinding wheel, 150 × 4 × 16 BLUE	0071614

**SHARPENING ANGLES**

	A	B	D
16H	7/32" 5.5 mm	35°	10°
18H, 18HX	7/32" 5.5 mm	35°	10°
			.050" 1.3 mm



# NEW!

Logger's SAW BAR

Logger's 75

**LOGGER'S PRODUCTS** are a more affordable choice of high quality wearing parts and accessories.

LOGGER'S SAW BARS		
2.0 mm, 75 cm, JET-FIT		0084903
2.0 mm, 75 cm, LARGE BASE		0085143
2.0 mm, 82 cm, JET-FIT		0084909
2.0 mm, 75 cm, JET-FIT, UREA		0085144
2.0 mm, 75 cm, LARGE BASE, UREA		0085145
2.0 mm, 82 cm, JET-FIT, UREA		0084912



LOGGER'S .404 saw chains are made with the highest quality steel alloys, and they have a chrome finish to improve durability. The Logger's harvester chain has a unique high-profile pitch that guarantees the best sawing results and efficient chip removal. Choose Logger's for its larger studs and wider sawing surfaces.

LOGGER'S SAW CHAINS	
72DL	0084070
74DL	0084071
75DL	0084072
77DL	0084073
78DL	0084074
79DL	0084075
80DL	0084076
82DL	0084077
85DL	0084078
86DL	0084407
87DL	0084079
88DL	0084080
89DL	0084081
90DL	0084082
94DL	0084403
96DL	0084786
97DL	0084083
104DL	0085428
Feed roller (30.48 m)	0082501





# STUMP TREATMENT



STUMP TREATMENT PUMPS	
Stump treatment spray refilling pump	0061282
Seal set for refilling pump	0065933
Stump treatment spray spraying pump	P19775
Seal set for spraying pump	NH40590-05



ROTARY JOINT	
1"	0047860
3/4"	0062410



ROTARY JOINT, TAIMI BSP	
3/4" BSP MALE-MALE	0070142
3/4" BSP MALE, SWIVEL CARTRIDGE	0068179
1" BSP MALE-MALE	0068178
1" BSP MALE, SWIVEL CARTRIDGE	0069569
1 1/4" BSP MALE, SWIVEL CARTRIDGE	0070140

ROTARY JOINT, TAIMI ORFS	
3/4" ORFS MALE-MALE	0071461
3/4" ORFS MALE, SWIVEL CARTRIDGE	0071463
1" ORFS MALE-MALE	0071462
1" ORFS MALE, SWIVEL CARTRIDGE	0071464



ROTARY JOINT, INDEXATOR	
3/8"	0062882
1/2"	0062883
3/4"	0062410
1"	0047860
1 1/4"	0066914
BSP 1/4U-1/4S	0065819
Seal set 1"	0047861



END SLEEVES	
4.0 mm, grey	0056172
2.5 mm, blue	0017305
1.5 mm, red	0017307
1.0 mm, yellow	0017310
0.75 mm, white	0017306
0.5 mm, orange	0017308
0.25 mm, light blue	0017309



# FEED ROLLERS H5



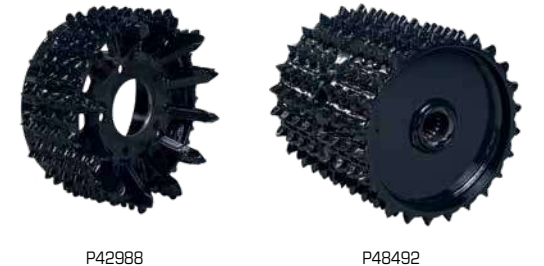
MARITIME PINE SPIKES 25 MM	
Aggressive, good grip, durable.	
Feed roller	P35205
Feed roller	P35208
Top roller	P48492
Extra roller	P44227



SHORT SPIKES 12 MM	
Roller with short spikes for minimal surface damage.	
Feed roller	P39156
Feed roller	P39155
Top roller	P48492
Extra roller for multi-stemming	P44227



ROLLERS WITH "FINGERS" FOR MULTI-STEMMING 25 MM	
Durable multi-stemming roller with wedge locking.	
Feed roller	P42981
Feed roller	P42980
Top roller	P48492



ROLLERS WITH "FINGERS" FOR MULTI-STEMMING 12 MM	
Feed roller with short spikes and wedge locking to minimise surface damage.	
Feed roller	P42988
Feed roller	P42987
Top roller	P48492



## PONSSE PARTS ONLINE PARTS ONLINE 24/7





### FEED ROLLERS H6, H7, H7 HD EUCA, H8, H8 HD



MARITIME PINE SPIKES 27 MM	
Aggressive, good grip, durable.	
Feed roller	P37414
Feed roller	P37416
Top roller (12 mm)	AM05817
Extra roller for multi-stemming	P41738

SHORT SPIKES 12 MM	
Roller with short spikes for minimal surface damage.	
Feed roller	P44337
Feed roller	P44338
Top roller (12 mm)	AM05817
Extra roller for multi-stemming	P41732



25 MM SPIKES	
Good grip, durable.	
Feed roller	P51645
Feed roller	P51693
Top roller (12 mm)	AM05817
Extra roller for multi-stemming	P41738



ROLLERS WITH "FINGERS" FOR MULTI-STEMMING 27 MM	
Aggressive, durable multi-stemming roller with wedge locking and a good grip.	
Feed roller	P53029
Feed roller	P53033
Top roller (12 mm)	AM05817

ROLLERS WITH "FINGERS" FOR MULTI-STEMMING 12 MM	
Feed roller with short spikes and wedge locking to minimise surface damage.	
Feed roller	P42564
Feed roller	P42563
Top roller (12 mm)	AM05817



ROLLER WITH BLADES (10 MM)	
Good grip both when feeding forward and backward.	
Feed roller	P60353
Top roller (12 mm)	AM05817



### DELIMBING KNIFE COVERS



#### DELIMBING KNIFE COVERS

A protective fabric cover that can be placed over grapple delimiting knives during maintenance to prevent damaging the knives.

A protective fabric cover that can be placed over grapple delimiting knives during maintenance to prevent damaging the knives. When the machine is in for maintenance, the grapple is on the floor, and the knives are out. Cover the knives to prevent injuring yourself or others.

Shell material: (40% of the product material) Fabric: Viking fabric, black 70% PES (= polyester) 30% CO (= cotton)

Padding: (20% of the product material) Material: Polyurethane padding 100% PU (= polyurethane)

Lining: (40% of the product material) Fabric: Cordura, black 96% PA (=polyamide) 4% PU (= polyurethane)

Strap: Velcro Material: 100% nylon

The cover is easy to place over the delimiting knife. Just place the cover over the knife and fasten it in place with the strap.

4 covers	0085894
1 cover	0085893



## MINIMUM LEAD TIMES FOR THE MAINTENANCE OPERATIONS

The global Ponsse service network includes more than 200 service centres. The service centres are located centrally in terms of customers' business operations and logistics. Part of the service centres' activities are workshops, which are equipped to provide fast maintenance operations, thereby ensuring trouble-free harvesting. The spare part storages located in connection with the workshops guarantee minimum lead times for the maintenance operations.







# CRANE AND LOADER PARTS

The PONSSE line is guaranteed to have a grapple fit for any load. Our range of wearing parts also ensures you can keep working in all situations. Ponsse's spare parts logistics are first class, which makes ordering parts easy and delivery fast.

Grapples.....	70	Complete chain sets.....	74
Rotators.....	73	Cable sets .....	74
Slide pad sets .....	74		



## GRAPPLES – STANDARD



### PONSSE C30L

- A sturdy basic grapple for small and medium-sized forwarders. 0080544

### PONSSE C42

- A large opening of 2010 mm for efficient working. 0082851
- Maximum load-carrying capacity 6000 kg.

### PONSSE C46

- For efficient working 0082235
- A large opening of 2010 mm
- Maximum load-carrying capacity 6000 kg.

### PONSSE C26L

- A compact and efficient grapple with the largest opening in its class. 0080543

### PONSSE C36L

- A reliable medium-sized grapple for forwarders. 0080545

### PONSSE SG260

- The narrowing pin bushing prevents any movement in joints 0081092
- The cylinder shock absorber reduces impact loads, designed for an operating pressure of up to 25 MPa.
- High-strength steel and robot welding minimise downtime.

### SG300S

- The SG comprises the frame and the upper and lower jaws. The jaws are attached to the frame with a four-pin connection. 0082623
- The cylinder mechanically limits the maximum opening of the jaws.
- The jaws mechanically limit their minimum opening.
- The grapple can be attached to most rotators on the market with a flange.

### PONSSE SG360

- The narrowing pin bushing prevents any movement in joints 0081568
- The cylinder shock absorber reduces impact loads, designed for an operating pressure of up to 25 MPa.
- High-strength steel and robot welding minimise downtime.

### PONSSE SG420

- The narrowing pin bushing prevents any movement in joints 0081535
- The cylinder shock absorber reduces impact loads, designed for an operating pressure of up to 25 MPa.
- High-strength steel and robot welding minimise downtime.

## GRAPPLES – HEAVY-DUTY



### PONSSE SG260S

- A reinforced model for demanding forestry and excavation applications. 0081091
- The narrowing pin bushing prevents any movement in joints
- The cylinder shock absorber reduces impact loads, designed for an operating pressure of up to 25 MPa.
- Strong and cast push bars.

### PONSSE SG260RSS

- A reinforced S-model for demanding forestry and excavation applications. 0081094
- The narrowing pin bushing prevents any movement in joints
- Strong and cast push bar.

### PONSSE SG360S

- A reinforced model for demanding forestry and excavation applications. 0080468
- The narrowing pin bushing prevents any movement in joints
- The cylinder shock absorber reduces impact loads, designed for an operating pressure of up to 25 MPa.
- Strong and cast push bars.

### PONSSE SG360RS

- An extra reinforced S-model for the most demanding forest machine and excavator operations. 0080469

### PONSSE SG420S

- A reinforced model for demanding forestry and excavation applications. 0081826
- The narrowing pin bushing prevents any movement in joints
- The cylinder shock absorber reduces impact loads, designed for an operating pressure of up to 25 MPa.
- Strong and cast push bars.

### PONSSE SG520S

- The SG comprises the frame and the upper and lower jaws. The jaws are attached to the frame with a four-pin connection. 0082775
- The cylinder mechanically limits the maximum opening of the jaws.
- The jaws mechanically limit their minimum opening.
- The grapple can be attached to most rotators on the market with a flange.

### PONSSE SG720S

- The SG comprises the frame and the upper and lower jaws. The jaws are attached to the frame with a four-pin connection. 0085574
- The cylinder mechanically limits the maximum opening of the jaws.
- The jaws mechanically limit their minimum opening.
- The grapple can be attached to most rotators on the market with a flange.

### PONSSE C36L HD

- A reinforced HD model with extra strong jaws for demanding forwarder operations. 0080546



## GRAPPLES – BIO



### PONSSE C42E5

- A sturdy five-spoke energy grapple.
- Spikes made from Hardox 400 wear-resistant steel.

0077267



### PONSSE C30E4

- A reliable four-spoke energy grapple for basic operations.
- Spikes made from Hardox400 wear-resistant steel.

0077265

### PONSSE C46 E4

- A reliable four-spoke energy grapple for basic operations.
- Spikes made from Hardox400 wear-resistant steel.

0082445

### PONSSE SG260R

- For the processing of logging residues and bioenergy wood
- The narrowing pin bushing prevents any movement in joints
- The cylinder shock absorber reduces impact loads, designed for an operating pressure of up to 25 MPa.

0081093

### PONSSE SG360R

- For the processing of logging residues and bioenergy wood
- The narrowing pin bushing prevents any movement in joints
- The cylinder shock absorber reduces impact loads, designed for an operating pressure of up to 25 MPa.

0081569

## GRAPPLES – DUO

### PONSSE 028 DUO

- Duo saves time when changing from branches to regular timber and the other way round – quickly.



### PONSSE 035 DUO

- Duo saves time when changing from branches to regular timber and the other way round – quickly.

## GRAPPLES – V-SHAPE



### PONSSE 035 V-SHAPE

- The V-shape reminds us of our standard grip and is specifically designed to make sorting easier.



### GRAPPLE BUSHING SET

HULTDINS 260	0065966
HULTDINS 360	0066911
HSP 028	0065965
HSP 035	0065965
HSP 035HD	0066671
HSP 040	0065965

## ROTATORS



### INDEXATOR FOR HARVESTERS

AV12S	0068182
AV17S	0068188
REMAN	0068188V
H132	0068189
AV14S	0071413
H182	0078891
REMAN	0078891VR
H152	0080005
REMAN	0080005VR
G141	0078425VR
REMAN	

### BLACK BRUIN

RH3016 H-085 TR310.L100 2	0077616
REMAN	0077616VR
RH3016 H-085 TR310.L1002K	0077984
REMAN	0076165VR
RH3016	0078110
REMAN	0078110VR
RH3016 H-085 T	0078880

### INDEXATOR FOR FORWARDERS

GV12S	0068181
G121	0068185
GV12S-2	0068187
GV12-2	0068190
G121-2	0070139
GV17S	0070551
G141-2	0078425

### ROTOBEC

RT502	0072038
RT503E08	0073304



# REMAN PARTS

## PONSSE REMANUFACTURED PARTS

offer you a low-cost and eco-friendly way to replace damaged original parts.

**FOR MORE INFORMATION, CONTACT OUR SPARE PARTS SALESPERSONS!**



## SLIDE PAD SETS



### HARVESTER CRANES

Crane model	Crane serial number	No.
C50	C010001 »	0078395
C44+	330001 »	
C22+	380001-380098	
C44	350001-350252	
C5	370001 »	0078388
C6	360011 »	0078389
C55	290001 »	0078396
C22	340001-340255	0080117
C33	260001-260216	
C2	320001-320089	0071491
C4	310001-310626	
C2	320090-320091	0073292
C4	31627-31641	
C2	320092-320120	0073293
C4	310642-310764	
HN125	25323-252210	0063214
HN200	20001-20012	0063215

### FORWARDER LOADERS

Loader model	Loader serial number	No.
K90+, M&S-models	910001 »	0078390
K100+, M&S-models	940001 »	
K90Dual+	970001 »	
K70+, M & S-models	710001 »	0078392
K121, M-model	C020007 »	0081377
K121, S-model	C020008 »	0081378
K90, M&S-models	900001-901141	0063211
K100, M&S-models	930001-930250	
K90Dual	920001-920183	
K70, M&S-models	70001-70315	0063213
K70Dual	720001-720003	
K75	75001-75219	

## COMPLETE CHAIN SETS



### HARVESTER CRANES

Crane model	Crane serial number	No.
C5	370001 »	AM02965
C6	360011 »	AM02041
C2	320001-320120	AM02125
C4	310001-310764	
HN200	20001-20012	AM02125
	27013-27630	
HN125	25323-252210	AM02124

### FORWARDER LOADERS

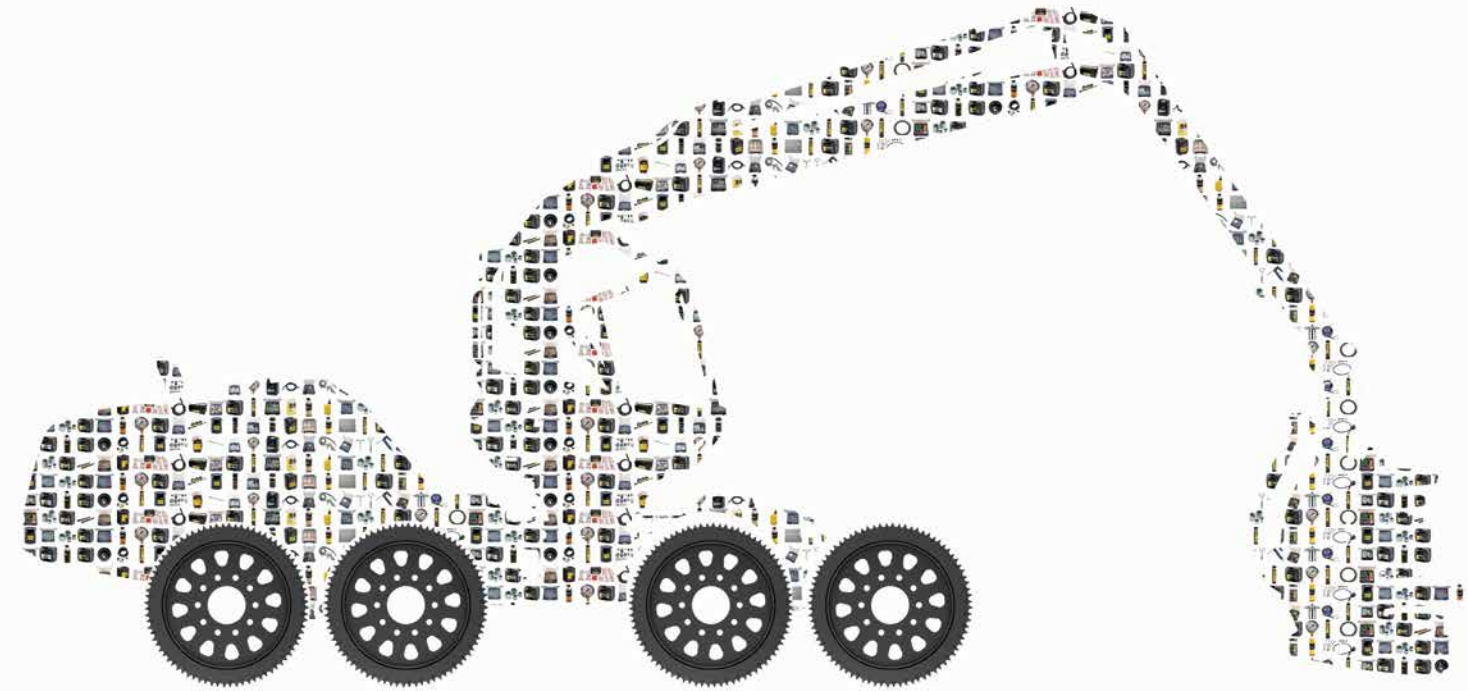
Loader model	Loader serial number	No.
K90M+	910001 »	AM02042
K100M+	940001 »	
K90Dual+	970001 »	
K70M+	710001 »	AM02957
K90M	900001-901141	AM02122
K100M	930001-930250	
K90Dual	920001-920183	
K70M	70001-70315	AM01614
K70Dual	720001-720003	
K75	75001-75219	

## CABLE SETS



### CABLE SET

Cable assembly between the harvester head and boom. PS1387  
The cable assembly is easy to install in the field without any cable tools in place of the previous cable without replacing the protective hose. Length 10 m. Any excess cable fits under the harvester head valve block.



# KEEP YOUR MACHINE AND WALLET IN GOOD SHAPE WITH PONSSE ACCESSORIES

Original PONSSE accessories are carefully selected and fit for use year after year. They are guaranteed to be suitable for the servicing, maintenance, repair and equipping of PONSSE forest machines, but most can also be used for the maintenance of other machines and cars.

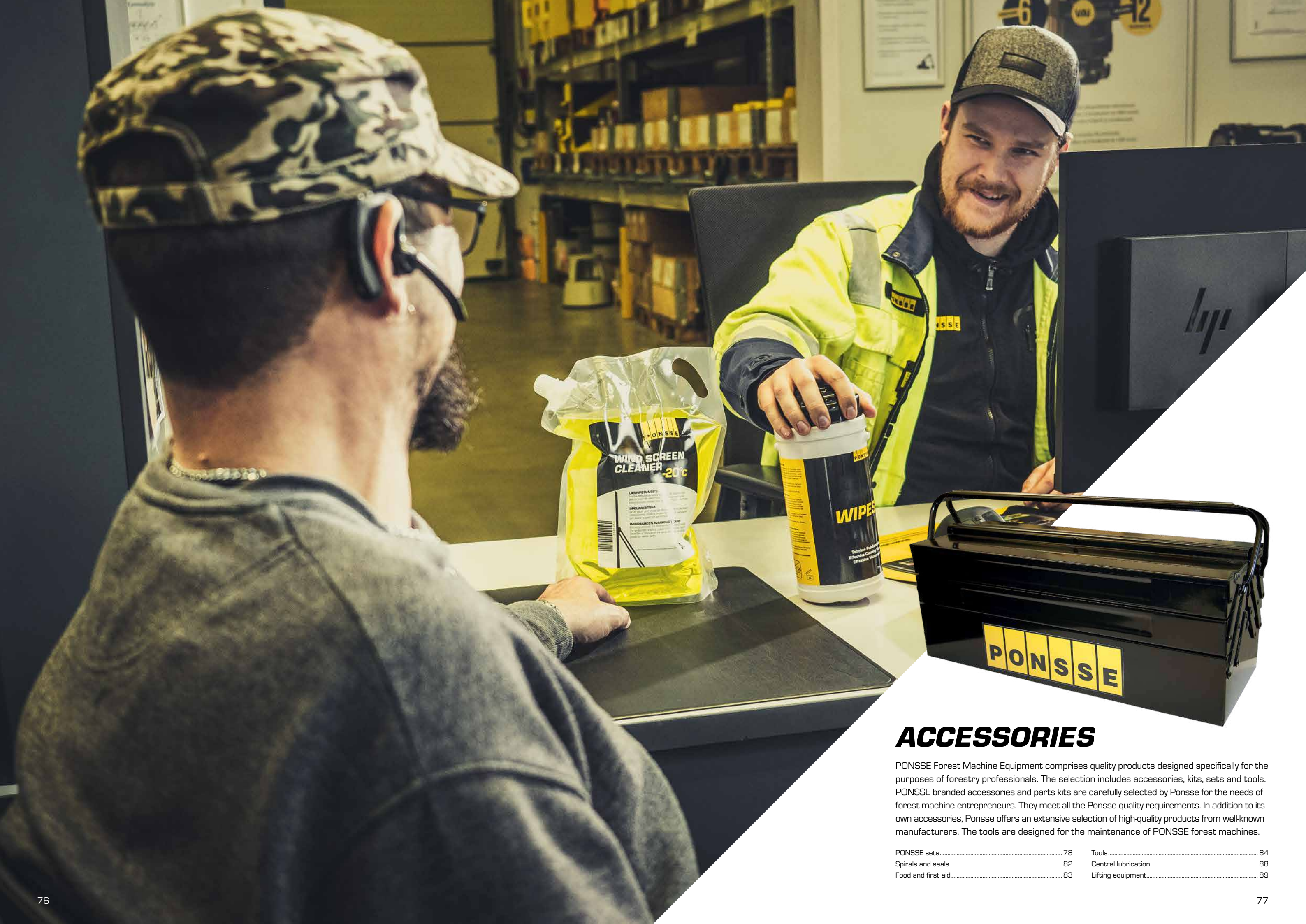
### SELECTION FULL OF QUALITY

Our selection comprises oils, liquids, accessories, spare part sets and tools. Learn more at PONSSE authorised partners and order the products to be delivered and shelved at your facility via the PONSSE Express delivery service.



**PONSSE PARTS ONLINE**  
**PARTS ONLINE 24/7**





## ACCESSORIES

PONSSE Forest Machine Equipment comprises quality products designed specifically for the purposes of forestry professionals. The selection includes accessories, kits, sets and tools. PONSSE branded accessories and parts kits are carefully selected by Ponsse for the needs of forest machine entrepreneurs. They meet all the Ponsse quality requirements. In addition to its own accessories, Ponsse offers an extensive selection of high-quality products from well-known manufacturers. The tools are designed for the maintenance of PONSSE forest machines.

PONSSE sets.....	78	Tools.....	84
Spirals and seals.....	82	Central lubrication.....	88
Food and first aid.....	83	Lifting equipment.....	89



**PONSSE SETS**



**WASHER SET**  
The set includes 610 lock washers. 0070885

**SHRINK-FIT ADHESIVE BUSHING SET**  
Shrink-fit bushings with adhesive, six (6) different sizes. 0075009

**FITTING AND PLUG SET.**  
BSP fitting and plug set. 0073160



**NIPPLE SET**  
The set includes 440 grease nipples. 0070032



**PROFILE RING SET**  
The set includes 110 profile rings. 0075248



CONNECTOR SETS	
SCR system connector parts and hose clamps	0076891
Connector set for progressive lubrication lines	0077182
Molex set – connector & contact	0076223
Coolant, fuel, oil and AdBlue/DEF temperature	0073993
<ul style="list-style-type: none"> <li>• Crankshaft and camshaft position sensor</li> <li>• Gas valve and AdBlue/DEF dosing valve</li> <li>• Oil and AdBlue/DEF pressure sensor</li> <li>• Cover for large PLD connector</li> <li>• Unit pump, ring connector</li> <li>• Cover MB-PLD, small</li> <li>• Large PLD connector – boost pressure sensor</li> <li>• Start and stop switches and oil level sensor</li> <li>• AdBlue/DEF tank and AdBlue/DEF dosing unit diffuser heating</li> <li>• AdBlue/DEF compressed air pressure sensor</li> <li>• Contacts, seals, plugs for large PLD connector</li> </ul>	
Base machine electrical connector set, the most common electrical connectors.	0072798
Central lubrication line connector set. The central lubrication line connector set includes 21 different items.	0072153
Deutsch DT connector set.	0071145
Electrical connector set for H6/H7/H8 harvester heads Connectors and accessories: Deutsch, Module, PVC25 Tools: Deutsch crimping tool, end sleeve pliers	0070091
Connector set for installing a separate harvester head	0079886
<ul style="list-style-type: none"> <li>• 8-pin Deutsch connector, large (LG)</li> <li>• Square cable pins (2.5–1.5 mm<sup>2</sup>)</li> </ul>	
Connector set for installing a separate harvester head	0079887
<ul style="list-style-type: none"> <li>• 8-pin Deutsch connector, small (SM)</li> <li>• Square cable pins (1.5–0.75 mm<sup>2</sup>)</li> </ul>	



CONNECTOR SETS	
Central lubrication line hose connector. Cutting rings and connector nuts needed for the connections are not included in the greaser hose delivery. One connector set is needed for connecting one hose.	
M8L	0072259
M6LL	0072258
M4LL	0072257



PILOT VALVE ORIFICE SET	
Pilot valve orifice set, sizes 0.6 to 1.5 mm	0084240
0076250, pilot orifice Ø 0.6 mm, 06, 5 pcs	
0076251, pilot orifice Ø 0.7 mm, 07, 5 pcs	
0076252, pilot orifice Ø 0.8 mm, 08, 5 pcs	
0076253, pilot orifice Ø 0.9 mm, 09, 5 pcs	
0076254, pilot orifice Ø 1.0 mm, 10, 5 pcs	
0076255, pilot orifice Ø 1.1 mm, 11, 5 pcs	
0076256, pilot orifice Ø 1.2 mm, 12, 5 pcs	
0076257, pilot orifice Ø 1.3 mm, 13, 5 pcs	
0076258, pilot orifice Ø 1.5 mm, 15, 5 pcs	



ORFS FITTING SETS	
0061919, 1/4", R1/4U/SU-ORFS 9/16U 90, 10 pcs	0083709
0061918, 1/4", ORFS1/4-R1/4, 3 pcs	
0061916, 1/4", ORFS1/4U-ORFS1/4S 90, 2 pcs	
0061959, 3/8", R3/8U/SU-ORFS 9/16U 90, 8 pcs	
0061935, 3/8", ORFS3/8U-ORFS3/8S 90, 6 pcs	
0062992, 3/8", ORFS3/8-R3/8, 2 pcs	
0062988, 3/8", ORFS3/8-R1/2, 3 pcs	
0061925, 3/8", ORFS3/8-R1/4, 3 pcs	
0063432, 1/2", ORFS1/2U-ORFS1/2S 90, 4 pcs	
0062987, 1/2", ORFS 1/2-R1/2, 3 pcs	
0062274, 3/4", R3/4U/SU-ORFS 1 3/16U 90, 5 pcs	
0061941, 3/4", ORFS3/4-R3/4, 2 pcs	



FLANGE BOLT SET	
Flange bot set, most common sizes	0084459
0060712, M6 × 16, 20 pcs	
0061060, M8 × 20, 20 pcs	
0064242, M5 × 12, 20 pcs	
0064553, M6 × 12, 20 pcs	
0071964, M12 × 20, 10 pcs	
0072858, M12 × 30, 10 pcs	
0073034, M10 × 25, 6 pcs	
0073038, M12 × 25, 6 pcs	
0073666, M10 × 20, 5 pcs	
0075918, M12 × 35, 5 pcs	
0076342, M12 × 40, 10 pcs	





**O-RING SETS**

O-ring sets for harvester heads. Common O-rings.	0077004
Harvester heads H5, H6, H7, H8, H10	0076999
Harvester heads H5, H6, H7, H8, H10	0076998
Harvester heads H5, H6, H7, H8, H10	0076997
The set includes 160 O-rings connector SAE. NBR 90 shore.	0074391
O-rings connector BSP. 230 O-rings and tool set. NBR 90 shore	0071808
O-rings connector ORFS. NBR 90 shore.	0071613
The set includes 475 O-rings. The set includes the most common O-rings.	0070070
H60 / H60e	0063240
H53 / H73 / H73e	0063241



**BULB SET**

Bulb set	0071279
----------	---------



**END SLEEVE KIT**

Cable terminal sleeve kit.	0071230
----------------------------	---------

**ELECTRICAL CONNECTOR SET**

SP0172 GHW ELECTRIC FAN MB	0076021
----------------------------	---------



**FUSE SET**

The set includes 305 fuses.	0071054
-----------------------------	---------



**SPARE PART SETS**

Bolt and nut set H53, H60, H73e.	0075282
----------------------------------	---------



**SEAL SET**

BSPP O-ring & support ring set.	0075592
Copper seal set The set includes 240 seals. The set includes the most common copper seals.	0071608
Copper seal set The set includes 275 seals. The set includes the most common copper seals.	0071607
The USIT seal set includes 260 seal rings.	0070597



**SEAL SETS**

CH axle brake seal set.	0076561
H-series harvester heads. Seals for valve block, harvester heads H5, H6, H7, H8, H10	0076943
CH axle differential lock seal set.	0076776
Range selector luffing boom cylinder seal set. The seal set meets the requirements of both cylinders.	0073503



**PLUG SETS**

ORFS male and female plug set.	0075410
Male plug set (BSP)	0073998

**STICKER SET**

PONSSE sticker set for various purposes; heavy vehicles, vans, pick-ups and trailers.	0071186
---	---------

**TOOL SETS**

Tool set for harvester heads. The set includes a Crimp crimping tool, crimping pliers and wire strippers	0078968
--	---------

**DOOR LIMITER**

The door limiter prevents the door gas spring from overloading and from causing unexpected hazards due to breakage. The parts can be installed in all 2015 cabins (not Scorpion).	0079979
---	---------



**RETAINING RING SET SGA 15-45 MM**

Retaining ring set DIN471. 15 × 1.0 mm, 20 × 1.75 mm, 25 × 1.2 mm, 30 × 2.0 mm, 35 × 2.5 mm, 35 × 1.5 mm, 40 × 1.75 mm, 44 × 1.75 mm, 45 × 1.75 mm.	0080687
---	---------



**AIR CONDITIONER SERVICE KIT**

Use: For refrigerant maintenance.	0081301
0081281 Refilling valve R134a replacement tool, 1 pc	
0081279 Protective cap R134a pressure side 8 mm, 10 pcs	
0081280 Protective cap R134a intake side 8 mm, 10 pcs	
0076741 Valve cap low pressure, 10 pcs *	
0076740 Valve cap high pressure, 10 pcs *	
0081283 Needle valve R134a standard, 20 pcs	
0034232 O-ring 5/16" Ø6, 25 pcs	
0034233 O-ring 3/4" 8, 25 pcs	
0034234 O-ring 7/8" 10, 25 pcs	

\*Denso compressor connectors include light blue Japanese caps



**LUBRICATION PUMP AM04892 SERVICE KIT**

Harvester grapples H5, H6, H7, H8, H8HD	0081565
Including the most common maintenance parts:	
0013938 O-ring, 1 pc	
0035419 Filter, 1 pc	
0059215 Check valve, 1 pc	
0060148 Allen screw M6×40, 4 pcs	
0060663 Check valve, 2 pc	
0063713 Piston seal, 1 pc	
0065525 O-ring, 2 pc	
0066100 Seal set, 1 pc	
0076496 Valve cable, 1 pc	



## SPIRALS AND SEALS



### HOSE SHIELD SPIRALS

∅ mm	Length m	Colour	No.
12/15	50	black	0013429
15/18	50	black	0013430
50	1	yellow	0021225
25	6	black	0021226
32	6	black	0021227
12	10	black	0058387
75	1	black	0061218
140	1	black	0061219
110	2.2	yellow	0061855
110	2.2	black	0065491
110	1	black	0065522
50	1	black	0065524
50	6	black	0065740
75	6	black	0065741
110	6	black	0065742
25	6	black	0065743
20	6	black	0065744
75	2	black	0067320

### PONSSE HOSE PROTECTOR SPIRALS

∅ mm	Length m	Colour	No.
20 mm	6 m	Black/yellow, no logo	0083228
25 mm	6 m	Black/yellow	0083229
32 mm	1.1 m	Black/yellow	0083230
50 mm	1 m	Black/yellow	0083231
75 mm	1 m	Black/yellow	0083232
110 mm	1 m	Black/yellow	0083233
140 mm	1.2 m	Black/yellow	0083234
32 mm	6 m	Black/yellow	0083746
50 mm	6 m	Black/yellow	0083747
75 mm	6 m	Black/yellow	0083748
110 mm	6 m	Black/yellow	0083749



### USIT SEAL RING

1/8	0024745
1/4	0017301
3/8	0017319
1/2	0017327
3/4	0017335
1	0017343
1 1/4	0017350
1 1/2	0017352
2	0060549

## FOOD AND FIRST AID



### LUNCHBOX HEATER

The AutoMat® was designed for professionals whose workplace is their car, machine or other vehicle. The lunchbox heater is a great help for those working long hours at a logging site or who have irregular working hours or a special diet. It is also perfect for everyone who prefers a home-cooked meal to service station or kiosk lunches. The AutoMat® is sturdy and made with dark grey thermoplastic. The bottom is made with aluminium. Each lunch box slot has a power switch with a light. Comes with a 1.2 m power cable. The cable has a plug that fits automobile auxiliary power outlets. Comes with an aluminium lunchbox. Fill up the handy boxes with your favourite food, plug in the lunchbox heater, and your lunch is heated while you drive. AutoMat® heats your lunch in about 30 minutes, depending on the dish and amount. Power consumption is around 50 watts per lunchbox slot.

- Save money
- Eat when you want
- Choose where to eat
- Eat more healthily
- Heats your food in 30 minutes

12 V	0071651
24 V	0071571



### THERMOELECTRIC CAR COOLER, 8 L

This stylish car cooler suits most vehicle interiors, and it is easy to fix to the passenger seat or the middle backseat with a seat belt. The cooler can cool its contents up to 20 °C below the ambient temperature or to heat its contents up to 65 °C warmer than the ambient temperature. This ensures your snacks and drinks stay cool, and burgers and fries stay hot. The thermoelectric cooler is easy to use, and 0.33-litre cans and 0.5-litre bottles easily fit into the 8-litre cooling compartment. The Dometic BordBar TB 08 is powered with a 12 V DC power source.

0068137

- Cools up to 20 °C below the ambient temperature
- Heats up to 65 °C
- Easy to fix to your passenger seat or middle backseat with seat belt
- Volume 8 l
- Fits 0.33 l cans and 0.5 l bottles
- 12 V DC



### FIRST AID KIT

First aid kit	0035540
---------------	---------

**PONSSE PARTS ONLINE**  
**PARTS ONLINE 24/7**





**TOOLS**



**CABLE CONNECTIONS**

Soldering iron 24V/50W	ST0284
Soldering iron 230V/40W	ST0285
Crimping tool 0.5–2.5 mm <sup>2</sup>	ST0112
Cable shoe crimping tool 0.5–4.0 mm <sup>2</sup>	ST0111
Wire strippers 0.02–10 mm <sup>2</sup>	ST0110
Crimping pliers for insulated cable connectors 1.5–6 mm <sup>2</sup>	ST0113
Crimping pliers for uninsulated cable connectors 1.5–6 mm <sup>2</sup>	ST0114
Crimping pliers for uninsulated cable connectors 0.5–1.5 mm <sup>2</sup>	ST0115
Cable crimping tool for round connectors 1.2 mm	ST011602
Cable crimping tool for round connectors 1.6 mm	ST011601
Cable crimping tool for round connectors 2.5 mm	ST011605
Cable crimping tool for round connectors 3.5 mm	ST011604
Cable crimping tool for round connectors 4.0 mm	ST011603
Cable crimping tool for flat connectors 0558-99984 WURTH	ST011701
Cable crimping tool for flat connectors 0558-99985 WURTH	ST011702
Cable crimping tool for flat connectors 0558-99986 WURTH	ST011703
Cable crimping tool for Micro Timer II and III connectors 1.6 mm	ST011801
Crimping pliers for HARTING connectors	ST0312
HARTING connector contact extraction tool	ST031201
Extra head for HARTING connector extraction tool	ST031202
Adjustable Deutsch crimping pliers For separate solid connectors: 0064721, 0064722, 0064723, 0064724, 0064940, 0064941	ST0303
Deutsch crimping pliers (non-adjustable) For separate solid connectors: 0064721, 0064722, 0064723, 0064724, 0064940, 0064941	ST0302



**PRESSURE GAUGES**

0–6 bar	ST010901
0–60 bar	ST010902
0–250 bar	ST010903
0–400 bar	ST010904
0–600 bar	ST010905
Rubber cover	0035501

**PRESSURE GAUGE HOSES**

Pressure gauge hose, 60 cm	ST010906
Pressure gauge hose, 120 cm	ST010907



**TYRE INFLATOR**

Tyre inflator	0030957
---------------	---------



**REFILLING HOSES**

Hydraulic oil	AM00069
Fuel	AM00070



**SENSOR TESTER**

Sensor tester	1630177
---------------	---------



0070585

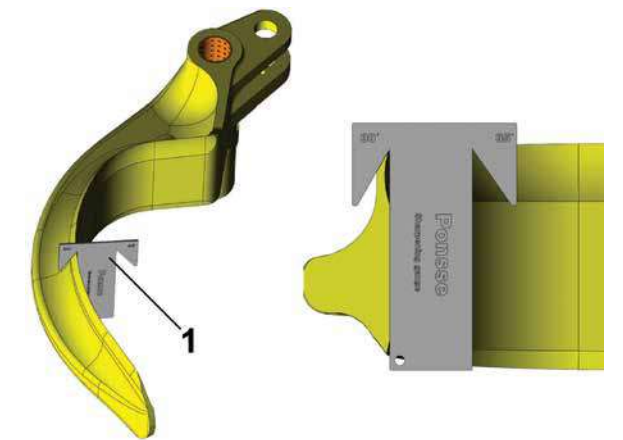
**MANUAL GREASING**

Grease gun, LINCOLN	0028555
Grease gun hose	0029017
Grease gun head, LINCOLN	0029025
Grease gun, SKF, battery-operated	0070585
Grease gun, pneumatic	0077769
Grease gun, pneumatic, winter model	0077770



**TAPE MEASURE FOR MEASURING CALIPERS**

Tape measure Caliper+	0062659
Tape measure Caliper3	0072666
Tape measure Caliper3, with bracket	0072668
Tape measure bracket, tilting	0074749



**MEASURING TOOL**

Delimiting knife sharpening angle gauge	ST00271
For checking the delimiting knife sharpening angle	ST0350



**BAR AND INSTALLATION RODS**

Aluminium bar 1.5 m, 2.8 kg	ST0337
Aluminium bar 1.5 m, 3.6 kg	ST0338
Aluminium installation rod 0.68 m, 0.7 kg	ST0339
Aluminium installation rod 0.68 m, 0.7 kg	ST0340
Aluminium installation rod 0.48 m, 0.5 kg	ST0341
Aluminium installation rod 0.43 m, 0.4 kg	ST0342
Aluminium installation rod 0.82 m, 1.7 kg	ST0343



**DUAL, GRAPPLE REPLACEMENT TOOL**

DUAL, grapple replacement tool	P14365
DUAL, grapple replacement tool	P16798





**SPANNER WRENCHES, KM**

Spanner wrench KM 5, socket 1/2"	ST0126
Spanner wrench KM 6, socket 1/2"	ST0127
Spanner wrench KM 7, socket 1/2"	ST0128
Spanner wrench KM 8, socket 1/2"	ST0129
Spanner wrench KM 9, socket 3/4"	ST0130
Spanner wrench KM 10, socket 3/4"	ST0134
Spanner wrench KM 11, socket 3/4"	ST0135
Spanner wrench KM 13, socket 3/4"	ST0231
Spanner wrench KM 14, socket 1"	ST0325
Spanner wrench KM 15, socket 1"	ST0232
Spanner wrench KM 16, socket 1"	ST0324
Spanner wrench KM 17, socket 1"	ST0299
Spanner wrench KM 19, socket 1"	ST0323
Spanner wrench KM 21, socket 1"	ST0198B
Spanner wrench KM 23, socket 1"	ST0039B
Slewing gear socket	ST0349



**SPANNER WRENCHES, GU**

Spanner wrench GU 11, long	ST0132
Spanner wrench GU 13	ST0133
Spanner wrench GU 15	ST0236
Spanner wrench GU 11, short	ST0131



**EXTRACTORS**

Extractor 1 25-80 mm, bipod	ST001401
Extractor 2 25-130 mm, bipod	ST001402
Extractor 3 50-160 mm, bipod	ST001403
Extractor 4 60-200 mm, bipod	ST001404
Extractor 5 80-250 mm, bipod	ST001405
Extractor 6 80-350 mm, bipod	ST001406
Internal bearing extractor set 12-46 mm	ST0250



**HYDRAULIC CYLINDER WRENCHES**

Hydraulic cylinder wrench 220 mm	ST0344
Hydraulic cylinder wrench 450 mm	ST0271
Hydraulic cylinder wrench 500 mm	ST0012
Hydraulic cylinder wrench 500 mm	ST0329A
Hydraulic cylinder wrench 800 mm	ST0329B
Hydraulic cylinder wrench 1000 mm	ST0329C
Pin set 6/8 550 mm	ST032901
Pin set 10/L 550 mm	ST032902
Pin set 12/14 800 and 1000 mm	ST032903
Pin set 16 800 and 1000 mm	ST032904



**T-KEYS**

T-key	ST0288
T-key, long	ST028801



**TOOL BOX**

430 × 205 × 200 mm	0035544
MS2015 with tools	0076651

**TOOL SETS**

Basic tool set, model series 2015	0076651
Expanded tool set for forwarders	ST0334
Expanded tool set for harvesters	ST0335



**PONSSE WIPES – EFFECTIVE CLEANING WIPES**

Effective and durable, two-sided, easy cleaning wipes for various uses. Rough side for quickly removing dirt and smooth side for wiping any remaining dirt. Excellent for cleaning hands, tools and different surfaces in locations where no water is available. Also excellent for use in forest machines and maintenance vehicles and at repair shops. Thanks to its frost resistance, can be cleaned outdoors up to temperatures of -20 °C. Removes: Oil, grease, paint, silicone, toner, PU foam, soot, sealing agents, etc. Operating instructions: Open the cover and remove the seal. Remove wipes from the middle of the roll through the hole in the cover. Pull wipes diagonally to cut them automatically. Close the cover. Do not store at high temperatures or in direct sunlight.



**ABSORPTION MATS**

For absorbing small volumes – oils and medium hard chemicals, also for water. Discard the product in accordance with the absorbed material's safety data sheet.

2 towels 100 cm × 40 cm	00811752
Absorption efficiency 2.8 litres (package)	
3 towels 100 cm × 40 cm	00811753
Absorption efficiency 4.2 litres (package)	



**SLINGS**

0.50 m	0076760
0.75 m	0076761
1.00 m	0076762
1.50 m	0076763



## CENTRAL LUBRICATION



### MANUAL FILLING DEVICE FOR SHF CENTRAL LUBRICATION PUMPS

Manual filling device for pumping greases of class NLGI-000 – NLGI-2. The filling device includes a quick release coupling for filling SKF HG-1000 and HG-2000, SKF Minilube, 40PGAS and SKF Multilube pumps. The filling device is available in two versions, depending on the lubricant.

Filling device, SAFEMATIC, for NLGI 000-0 greases	0035460
Filling device, SAFEMATIC, for NLGI 1–2 greases	0071645

### CENTRAL LUBRICATION

Nipple assortment + crimping tool	SM11800064
-----------------------------------	------------



### TUFF JUG CANISTER 20 L

Suitable for DEF-refilling. Before first use, attach the black breather hose to the spout and slip the hose inside the handle. This ensures proper function.

0084243

- Volume 20 litres
- Made with durable PE plastic
- Patented quick refill cap with automatic shut-off
- The spill-proof ripper cap automatically shuts when the tank is full
- Refills 10 litres in under 18 seconds.



### MANUAL GREASING

Grease gun, LINCOLN	0028555
Grease gun hose	0029017
Grease gun head, LINCOLN	0029025
Grease gun, SKF, battery-operated	0070585
Grease gun, pneumatic	0077769
Grease gun, pneumatic, winter model	0077770



### OIL ANALYSIS AND SYSTEM ANALYSIS

Oil analysis	Oil condition	0071899
System analysis	System condition	0071900
Oil analysis	Engine oil analysis	0083066

## LIFTING TOOLS

### CHAIN SLINGS

2-leg chain sling Ø 8 mm, grade 10, length 2,000 mm, bolt hooks, chain shorteners. Max. load 3.5 t (2.5 t if lifting angle is more than 45°, max. 60°) VIP-VCGH/VAK2-2.0M-2500KG-VMVK	ST00280
2-leg chain sling Ø 10 mm, grade 10, length 2,500 mm, bolt hooks, chain shorteners. Max. load 5.6 t (4.0 t if lifting angle is more than 45°, max. 60°) VIP-VCGH/VAK2-2.5M-4000KG-VMVK	ST00281
2-leg chain sling Ø 13 mm, grade 12, length 2,000 mm, bolt hooks, chain shorteners. Max. load 11.2 t (8.0 t if lifting angle is more than 45°, max. 60°) ICE-ISH/IAK2-2.0M-8000KG-IMVK	ST00282
4-leg chain sling Ø 8 mm, grade 10, length 2,500 mm, bolt hooks, chain shorteners. Max. load 5.25 t (3.75 t if lifting angle is more than 45°, max. 60°) VIP-VCGH/VAK4-2.5M-2500KG-VMVK	ST00283

### CHAIN HOISTS

WLL 250 kg, NR-03, lifting height 1.5 m	ST00302
WLL 500 kg, NR2-05, lifting height 3.0 m	ST00301
WLL 800 kg, VR3-08, lifting height 3.0 m	ST00300
WLL 1,600 kg, VR3-15, lifting height 3.0 m	ST00299

### BALL BEARING LIFTING POINTS

Lifting point VWBG-V 1.3-M16 (RUD) standard VWBG-V M16	ST00284
Lifting point VWBG-V 1.3-M16 (RUD) long VWBG-V M16 E	ST00284-L
Lifting point VWBG-V 2.0-M20 (RUD) standard VWBG-V M20	ST00285
Lifting point VWBG-V 2.0-M20 (RUD) long VWBG-V M20 E	ST00285-L
Lifting point VWBG-V 3.5-M24 (RUD) standard VWBG-V M24	ST00286
Lifting point VWBG-V 3.5-M24 (RUD) long VWBG-V M24 E	ST00286-L

### LIFTING RING, ROTATING 360°

Lifting ring VRS 0.4 t M10 (RUD) VRS-F-M10	ST00287
Lifting ring VRS 0.75 t M12 (RUD) VRS-F-M12	ST00288
Lifting ring VRS 1.55 t M16 (RUD) VRS-F-M16	ST00289
Lifting ring VRS 2.35 t M20 (RUD) VRS-F-M20	ST00290

### BALL BEARING LIFTING POINTS

Lifting point bolt VLBG+ 1.35 t M12 (RUD) standard VLBG+ 1.35 t M12	ST00291
Lifting point bolt VLBG+ 2.05 t M16 (RUD) standard VLBG+ 2.0 t M16	ST00292
Lifting point bolt VLBG+ 3.5 t M20 (RUD) standard VLBG+ 3.5 t M20	ST00293
Lifting point bolt VLBG+ 4.5 t M24 (RUD) standard VLBG+ 4.5 M24	ST00294
Lifting point bolt VLBG+ 1.35 t M12 (RUD) long VLBG+ 1.35 t M12 E	ST00291-L
Lifting point bolt VLBG+ 2.05 t M16 (RUD) long VLBG+ 2.0 t M16 E	ST00292-L
Lifting point bolt VLBG+ 3.5 t M20 (RUD) long VLBG+ 3.5 t M20 E	ST00293-L
Lifting point bolt VLBG+ 4.5 t M24 (RUD) long VLBG+ 4.5 M24 E	ST00294-L

### SYNTHETIC LIFTING SLINGS

Round slings 1.0 t length 1/2 m Supra Plus 1000 1 m	ST00295
Round slings 2.0 t length 2/4 m Supra Plus 2000 2 m	ST00296
Webbing slings 0.5 t length 1 m SV00501	ST00303 or ST00297
Webbing slings 2.0 t length 2 m SV02002 or PB Star 2000 2 m	ST00298



**PONSSE PARTS ONLINE**  
**PARTS ONLINE 24/7**





# CHEMICALS

PONSSE chemicals are guaranteed to suit PONSSE machines, which makes them safe to use. By choosing PONSSE chemicals, you ensure that your machine stays in good condition, operational and in service for a long time. Our lubricant selection has grown significantly, and new products have also been added to other product groups. We have also given our packaging a fresher new look.

Engine oils.....	92	Coolants.....	97
Hydraulic oils.....	93	AdBlue.....	97
Gear oils.....	93	Distilled water.....	97
Vaselines.....	94	Saw chain oils.....	98
Lubrication grease.....	95	Marking colours.....	99
NLGI grades of lubricants used in central		Chemicals.....	100
lubrication systems.....	96	Windscreen washing liquids.....	101
Greasing points.....	96	Paints.....	101





# ENGINE OILS

Oil quality is continuously improving. We have selected the best of the best for your convenience. The new products make our product range comprehensive. The PONSSE product range now has an engine oil for all conditions.



**NEW!**

### PONSSE HEAVY DUTY 5W-30

PONSSE HEAVY DUTY 5W-30 is a heavy-duty engine oil with first-rate engine-protecting properties, including in extremely hot and cold operating conditions and with long oil change intervals. It is especially designed for newer low-emission diesel engines.

20 l	
200 l	
1,000 l	



### PONSSE ENGINE OIL 10W-40

Synthetic high-quality diesel engine oil excellent for demanding conditions.

- Keeps the engine clean, protects it against wear, and keeps oil consumption low.
- Good lubrication properties both in summer and winter
- For the TP2000 range with a 600-hour oil change interval and for EU Stage IV engines/machines of model series 2015. SAE 10W-40, API CI-4/SL, CH-4, CG-4, CF-4, ACEA E7, E5, E3, Mercedes-Benz 228.3, Volvo VDS-3, Volvo VDS-2, MAN M 3275, Mack EO-N, EO-M Plus, Cummins CES 20,071/-2/-6/-7/-8, Renault RVI RLD, RLD-2, Global DHD-1, Caterpillar ECF-2, ECF-1-a, MTU Type 2, Deutz DGC III-10

20 l canister	0074998220
200 l barrel	00749982200



**NEW!**

### PONSSE 10W-40 HEAVY DUTY ENGINE OIL

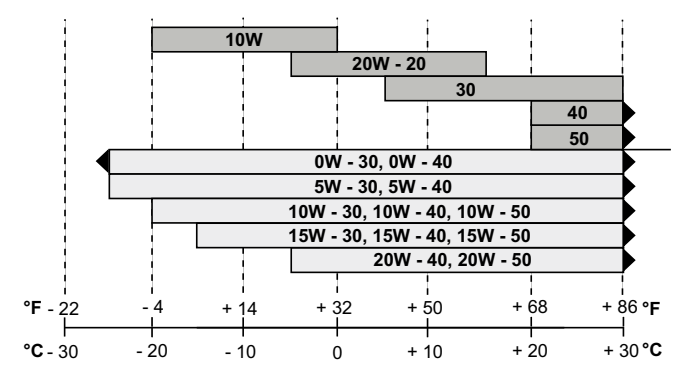
PONSSE 10W-40 Heavy Duty Engine oil is a fully synthetic high-performance diesel engine oil for new high-power forest machine diesel engines meeting the Stage IV and Stage V emissions standards that have longer oil change intervals and equipped with an exhaust after-treatment system.

- Suitable for longer oil change intervals
- Reduces emissions
- Excellent performance in cold conditions
- Excellent capacity to keep the engine clean
- Compatible with exhaust after-treatment systems

Note: Can be mixed with the previous PONSSE Engine Oil 10W-40 PLUS+ (0080229).

20 l	008187720
200 l	0081877200
1,000 l	00818771000

### ENGINE OIL OPERATING TEMPERATURES



# HYDRAULIC OIL



### PONSSE HYDRAULIC OIL 22 SUPER

22 Super is a mineral oil-based hydraulic oil with a broad operating temperature range designed for demanding use. ISO 11158 HV, DIN 51524 part 3 HVLP, SS 15 54 34 AV, AFNOR NFE 48-690/1, AFNOR NFE 48-603, Eaton Vickers I-286-S, M-2950-S, Denison HF-0, HF-1, HF-2 (2003), Cincinnati Milacron P-68 (32 Super)

20 l canister	007867120
200 l barrel	0078671200



### PONSSE HYDRAULIC OIL 46 SUPER

46 Super is a mineral oil-based hydraulic oil with a broad operating temperature range designed for demanding use.
• Suitable for demanding outdoor use round the year
• Good properties in cold conditions
• Efficient protection against wear, oxidation and corrosion
ISO 11158 HV, DIN 51524 part 3 HVLP, SS 15 54 34 AV, AFNOR NFE 48-690/1, AFNOR NFE 48-603, Eaton Vickers I-286-S, M-2950-S, Denison HF-0, HF-1, HF-2 (2003), Cincinnati Milacron P-70 (46 Super)

20 l canister	007500320
200 l barrel	0075003200



### PONSSE HYDRAULIC OIL 32 SUPER

A mineral oil-based hydraulic oil with a broad operating temperature range designed for demanding use. ISO 11158 HV, DIN 51524 part 3 HVLP, SS 15 54 34 AV, AFNOR NFE 48-690/1, AFNOR NFE 48-603, Eaton Vickers I-286-S, M-2950-S, Denison HF-0, HF-1, HF-2 (2003), Cincinnati Milacron P-68 (32 Super)

20 l canister	007500220
200 l barrel	0075002200

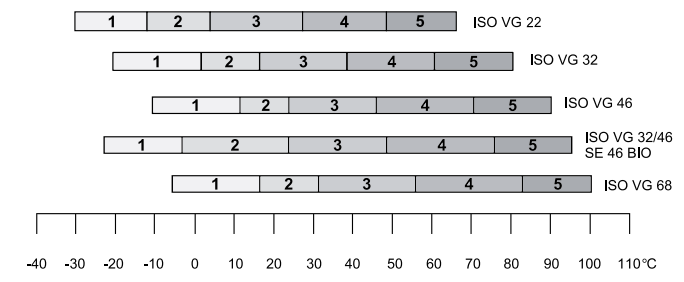


### PONSSE HYDRAULIC OIL 68 SUPER

68 Super is a mineral oil-based hydraulic oil with a broad operating temperature range designed for demanding use.
• Suitable for demanding outdoor use round the year
• Good properties in cold conditions
• Efficient protection against wear, oxidation and corrosion
ISO 11158 HV, DIN 51524 part 3 HVLP, SS 15 54 34 AV, AFNOR NFE 48-690/1, AFNOR NFE 48-603, Eaton Vickers I-286-S, M-2950-S, Denison HF-0, HF-1, HF-2 (2003), Cincinnati Milacron P-70 (46 Super)

20 l canister	007887220
200 l barrel	0078872200

### VISCOSITY OF HYDRAULIC OIL



# GEAR OILS



### PONSSE GEAR OIL 80W-90 GL-5

A mineral oil-based gear oil with EP additives and excellent lubrication properties for use round the year.
• Efficient additive
• For use round the year

SAE 80W-90, API GL-5, MIL-L-2105 D	
20 l canister	007500020
200 l barrel	0075000200



## VASELINES



### PONSSE GREASE NLGI 0

PONSSE Grease NLGI 0 is a mineral oil- and polymer-based lubricant that contains a waterless calcium-based viscosity modifier. It contains antioxidants, anti-corrosion agents, pressure resistance and anti-wear agents. The viscosity modifier, combined with the specific basic oil composition, makes the produce ideal for lubricating heavily loaded bearings, also in wet and corrosive conditions. Properties include excellent adhesion and water resistance.

PONSSE Grease NLGI 0 can be used as an all-purpose grease in forest, agricultural and earth-moving machines when the central lubrication system requires a semi-fluid grease.

- Extremely good water resistance
- Excellent corrosion resistance
- Excellent against heavy impact loads
- Excellent adhesion



18 kg 0073810



### PONSSE CENTER GREASE

A lithium-based water-repellent central lubrication grease designed for summer conditions. Excellent corrosion protection and mechanical resistance.

PONSSE Center Grease EP1 18 kg 0074909



### PONSSE GREASE NLGI 2

PONSSE Grease NLGI 2 is a mineral oil- and polymer-based lubricant that contains a waterless calcium-based viscosity modifier. It contains antioxidants, anti-corrosion agents, pressure resistance and anti-wear agents. The viscosity modifier, combined with the specific basic oil composition, makes the produce ideal for lubricating heavily loaded bearings, also in wet and corrosive-sensitive conditions. Properties include excellent adhesion and water resistance.

PONSSE Grease NLGI 2 is an all-purpose grease, designed especially for forest, agricultural and earth-moving machines. It is also suitable for industrial applications when special water and corrosion resistance is needed. Regardless of the high viscosity of the basic oil, it can easily be pumped in most modern central lubrication systems. PONSSE Grease NLGI 0 is recommended for use at low temperatures.

- Extremely good water resistance
- Excellent corrosion resistance
- Excellent against heavy impact loads
- Excellent adhesion



18 kg 0073933



### PONSSE CENTER GREASE

A lithium-based water-repellent central lubrication grease designed for winter conditions. Excellent corrosion protection and pumpability in cold conditions.

PONSSE Center Grease EPO 18 kg 0074910

## LUBRICATION GREASE



### PONSSE UNIVERSAL GREASE NLGI 2

PONSSE Universal Grease NLGI 2 is a lithium- and mineral oil-based lubricant. It contains antioxidants, anti-corrosion agents and anti-wear agents.

As a versatile all-purpose lubricant, it is suitable for various applications within the recommended operating temperature range. Its high mechanical and corrosion resistance also makes it ideal for lubricating bearings in wet conditions.

PONSSE Universal Grease NLGI 2 is a high-quality all-purpose lubricant that can be used to lubricate slide and roller bearings in various industrial and transport applications.

- Good mechanical resistance
- Good corrosion resistance
- Endless application possibilities



12 × 420 ml 0073809

### PONSSE PRO GREASE EP 2

PONSSE Pro Grease EP 2 is a lithium complex- and mineral oil-based lubricant. It contains antioxidants, anti-corrosion agents and anti-wear agents.

The lithium complex-based viscosity modifier gives the product a very broad operating temperature range and makes it ideal for high temperatures. The complex structure of the viscosity modifier gives the product an excellent mechanical resistance capacity, also when vibration or impact loads are directed at the lubricated application. It also extends lubrication intervals.

PONSSE Pro Grease EP NLGI 2 is a modern high-performance product that redefines the properties required from an all-purpose lubricant designed for industrial and transport applications. The diverse properties of the product make it the first choice for lubricating different types of bearings, also under heavy loads and at temperatures up to 220 °C.

- Excellent at high temperatures
- Very good mechanical resistance
- High load-bearing capacity
- Good corrosion resistance



12 × 420 ml 0073808

12 × 400 g, Lube Shuttle 0083572

### PONSSE GREASE NLGI 0

PONSSE Grease NLGI 0 is a mineral oil- and polymer-based lubricant that contains a waterless calcium-based viscosity modifier. It contains antioxidants, anti-corrosion agents, pressure resistance and anti-wear agents. The viscosity modifier, combined with the specific basic oil composition, makes the produce ideal for lubricating heavily loaded bearings, also in wet and corrosive conditions. Properties include excellent adhesion and water resistance.

PONSSE Grease NLGI 0 can be used as an all-purpose grease in forest, agricultural and earth-moving machines when the central lubrication system requires a semi-fluid grease.

- Extremely good water resistance
- Excellent corrosion resistance
- Excellent against heavy impact loads
- Excellent adhesion



12 × 420 ml 0073807

12 × 400 g, Lube Shuttle 0083613

18 kg 0073810

### PONSSE GREASE NLGI 2

PONSSE Grease NLGI 2 is a mineral oil- and polymer-based lubricant that contains a waterless calcium-based viscosity modifier. It contains antioxidants, anti-corrosion agents, pressure resistance and anti-wear agents. The viscosity modifier, combined with the specific basic oil composition, makes the produce ideal for lubricating heavily loaded bearings, also in wet and corrosive-sensitive conditions. Properties include excellent adhesion and water resistance.

PONSSE Grease NLGI 2 is an all-purpose grease, designed especially for forest, agricultural and earth-moving machines. It is also suitable for industrial applications when special water and corrosion resistance is needed. Regardless of the high viscosity of the basic oil, it can easily be pumped in most modern central lubrication systems.

PONSSE Grease NLGI 0 is recommended for use at low temperatures.

- Extremely good water resistance
- Excellent corrosion resistance
- Excellent against heavy impact loads
- Excellent adhesion



12 × 420 ml 0073806

12 × 400 g, Lube Shuttle 0083571

18 kg 0073933



## NLGI GRADES OF LUBRICANTS USED IN CENTRAL LUBRICATION SYSTEMS

PONSSE forest machines are equipped with an automatic lubrication system which allows the use of stiffer central lubricants.

Lubricants are divided into NLGI grades from 000 to 6. The higher the number of the grade, the stiffer the lubricant.

### The effect of temperature changes in selecting lubricants for central lubrication systems:

NLGI grade (stiffness) of the lubricant	Conditions	Temperature
1...2	Warm conditions (summer)	Over +0 °C
0...1	Cold conditions (winter)	Under 0 °C

In extreme winter conditions, NLGI 00 grease can be used. In warm conditions, NLGI 00 grease may cause malfunctions in the system.

**!** Mixing different grades of greases is not recommended. It may make it more difficult to pump the grease.

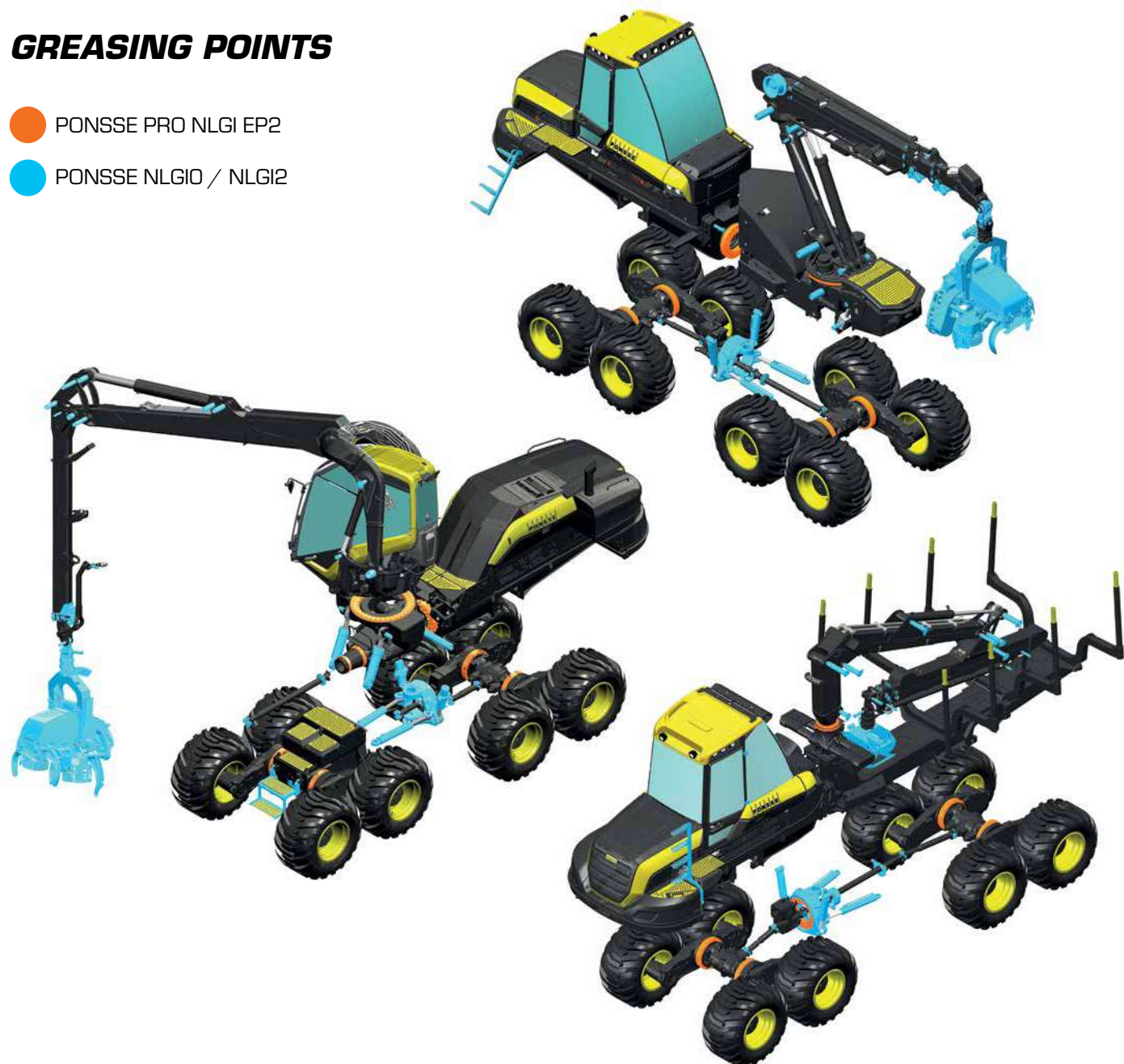
When changing the grade of the grease: fully use the old grease, fill the tank with the new grease, bleed the pumping unit and make sure that the new grease comes out through the bleeding screw.

See the pumping unit's bleeding instructions from the separate manual delivered with the machine.

Attention: When using Twin Heavy or newer system.

## GREASING POINTS

- PONSSE PRO NLGI EP2
- PONSSE NLGI0 / NLGI2



## COOLANTS



### PONSSE READY PRO COOLER 50%

PONSSE READY PRO COOLER 50% is ethylene glycol-based ready-to-use coolant with a long change interval. It meets most engine manufacturer requirements and provides excellent protection to your engine and cooling system.

- Hybrid organic acid technology (Si-OAT)
- Nitrite-free
- Excellent cold resistance
- Excellent corrosion resistance

10 l	008371410
200 l	0083714200
1,000 l	00837141000



### NESTE SUPERJÄÄHDYTINNESTE XLC

An ethylene-glycol-based radiator fluid. Frost resistance 50%, mixture -37 °C. Recommended for PONSSE forest machines equipped with a Mercedes-Benz engine.

10 l	006135810
200 l	0061358200

**PONSSE PARTS ONLINE**  
**PARTS ONLINE 24/7**

## ADBLUE



### ADBLUE/DEF FLUIDS FOR SCR ENGINES

NESTE AdBlue/DEF, 10 l	007180010
NESTE AdBlue/DEF, 1000 l	00718001000
IBC, 1000 l	00718001000P

## DISTILLED WATER

DISTILLED WATER	
Distilled water 1 l	0029795
Distilled water 4 l	0035295



## SAW CHAIN OILS



### PONSSE SEMI PRO MOTO RECYCLED CHAIN OIL

PONSSE Semi Pro Moto is a non-fling saw chain oil with carefully selected and tested additives that can withstand high surface pressures. This results in great lubrication between the chain and the bar at high chain speeds.

- Lubrication oil for harvester head saw chains and bars.
- Manufactured by purifying from high-grade used industrial lubrication oils and using additives.
- The renewed mixture of additives significantly reduces friction caused by contact between metal surfaces and their movement.
- Extends the service life of the saw chain, the saw bar and the top wheel.
- Reduces oil consumption – the saw chain oil feed can be reduced up to 40% compared to traditional oils.
- Excellent corrosion resistance.
- Pour point > -30 °C.

10 l	008491510
200 l	0084915200
1,000 l	00849151000



### PONSSE RECYCLED CHAIN OIL ADDITIVE

10 l canister	0080322
---------------	---------



### PONSSE BIO CHAIN OIL

The product is 97% pressed rapeseed oil, 2% raw rubber/vegetable oil product and 1% of a product which contains 54–58% of harmless acrylic polymer, and the rest comprises a compound of distillates (crude oil).

10 l canister	0064130
200 l barrel	0064130200
1000 l container	00641301000

# FOCUS ON EFFECTIVE AND PRODUCTIVE HARVESTING



## PONSSE MARKING COLOURS

PONSSE marking colours are nature-friendly, and all ingredients are 100% biodegradable, which makes them safe to use.

Thanks to good lubrication and corrosion resistance agents, marking colours lubricate the colour marking block to prevent any seal leakage or piston wear. The colours leave no solids or residues in the check valve or nozzle.



**ASK FOR A QUOTE FOR LARGER BATCHES!**

### PONSSE COLOR RED

A high-quality marking colour for harvesters. Red.

3 l bag	00720983
3 × 3 l box	00720983×3
10 l canister	0072098
200 l	0072098200
600 l, pallet, 60 × 10 l canister	0072098600
1000 l	00720981000

### PONSSE COLOR BLUE

A high-quality marking colour for harvesters. Blue.

3 l bag	00720993
3 × 3 l box	00720993×3
10 l canister	0072099
200 l	0072099200
600 l, pallet, 60 × 10 l canister	0072099600
1000 l	00720991000

# PONSSE ACTIVE CARE SERVICE AGREEMENTS

Even the best forest machine in the world needs service to operate at peak efficiency from one logging site to the next. With a PONSSE Active Care service agreement customised for your operating environment and business operations, you can outsource the service of your forest machine to Ponsse.



**ACTIVE CARE**





## CHEMICALS

**PONSSE WINDOW CLEANER SPRAY**

Cleans car and forest machine windows, and makes the bright. Also easy to use to clean mirrors, displays and plastic and painted surfaces.

Gross 520 ml / Net 400 ml

0078224

**PONSSE TAR SPRAY**

Protects threads and screw joints effectively from corrosion and jams where the temperature remains under 70 °C. Applications: Nuts, springs, various metal structures, etc. of wheels and base structures of vehicles and machines.

Gross 520 ml / Net 400 ml

0078222

**PONSSE CLEANING AND DEGREASING SPRAY**

Efficient, quickly evaporating cleaning agent, which leaves a grease-free and clean surface. Cleans oil, grease, brake fluid, and other dirt e.g. before painting or gluing. Applications: Clutches and brake parts, metal and glass surfaces, machines, devices, etc.

Gross 520 ml / Net 400 ml

0078223

**PONSSE GREASE SPRAY**

A synthetic lubricant with excellent adhesion for demanding lubrication. Good water resistance and high heat resistance. Applications: Slide pads, chains, hinges, joints, gears, bearings and applications susceptible to vibration, etc.

Gross 520 ml / Net 400 ml

0078221

**CHEMICALS**

Threadlocker, medium hard	0055256
Threadlocker, hard	0061860
Hydraulic seal	0055258
Hand washing agent 1 l	0062480

**PONSSE PARTS ONLINE**  
**PARTS ONLINE 24/7**



## WINDSCREEN WASHING LIQUID

**PONSSE WINDSCREEN CLEANER**

Efficiently removes dirt from windscreens and prevents the windscreen washing system from freezing. Does not leave film or residue on the glass and does not damage plastic or rubber parts. Ready-to-use  
Freezing point > 20 °C.  
Packaging size: 9 litres in 3 x 3-litre bags

0081250 x 3

## PAINTS

**PONSSE SPRAY PAINT**

Dark grey (Ponsse Grey)	0080872
Yellow (Ponsse Yellow)	0080873

**PONSSE WINDSCREEN WASHING LIQUID**

5 l (-22 °C)

0074337

**3 LITRE CANISTERS**

Dark grey, RAL7021	0029758
Yellow PANTONE PONSSE 1003	0067143

**1 LITRE CANISTERS**

Silver grey, machines with MB engines	0062047
---------------------------------------	---------

**PAINT THINNER**

Paint thinner 3 l	0035824
-------------------	---------





AN EASY WAY TO ORDER NEW MACHINE  
+ **FEATURES  
AND UPDATES**

THE PACKAGE PRICE IS MORE AFFORDABLE THAN  
+ **THE PURCHASE OF  
INDIVIDUAL PARTS**

GUARANTEED TO INCLUDE  
+ **EVERYTHING  
NECESSARY**

## **SPARE PART SETS**

We have created spare part sets for your convenience that make updating, servicing, maintaining and repairing your machine much simpler and more affordable than purchasing each part separately. The sets are guaranteed to include all necessary parts, which makes installation fast and hassle-free. With the spare part sets, modern features can be added to older machines – give a rejuvenating facelift to a well-used machine! The sets make everything more simple, affordable and less time-consuming. See our default spare part sets or ask our spare parts salespersons for a tailored set.



## OPTI 7 UPDATE PACKAGES FOR FORWARDERS



PONSSE forwarders can be seamlessly linked with the wood procurement management system with the high-performance Opti 7 PC system and Opti Forwarder software. This enables short-distance transport to be planned and implemented and roadside storage to be monitored almost in real-time. The software includes the Opti Control machine control system with operator profiles, the operator-specific Opti Progress Control productivity monitoring feature, as well as data transfer and reporting programs. A map program with GPS positioning and a data transfer application can also be added to the system. The Opti Map 2 program, available as an additional feature, is a versatile map positioning program for forest machines, which supports the comprehensive Opti 4G information system. When planning forwarder work, Opti Map 2 displays the harvester trail, the quantities of assortments by the trail and the locations of the harvester where it processed each pile.

### OPTI 7 UPDATE PACKAGES FOR FORWARDERS

Opti 7 installation for TP2004 forwarders	0083837
Opti 7 installation for MS2015 forwarders	0083836

## PONSSE OPTI 7 UPGRADE PACKAGE FOR OPTINET/SILVEROPTI & 1000 MACHINES



PONSSE harvesters, which use Ponsse's OptiNet, SilverOpti or 1000 measuring device, can be updated with the latest PONSSE Opti 7 upgrade package. After the upgrade, you get the most advanced measuring device technology in PONSSE forest machines, and can use the latest harvester and forest company software.

The upgrade package meets the requirements set in the new measurement legislation amendment to be enforced in the future.

### PONSSE OPTI 7 upgrade package for OPTINET machines

The machine's old PC and display are replaced with a new PONSSE Opti 7 touchscreen PC. DC nodes are replaced with AC modules, and the UPS unit is converted to act as a 12 V input circuit for the PONSSE Opti 7 PC, after which the new PC and power cable set can be installed in the cabin.

### PONSSE OPTI 7 upgrade package for SILVEROPTI & 1000 machines

Forest machines operating without Arcnet can be updated to match modern standards with the PONSSE Opti 7 installation package. The update is started by upgrading the base electricity up to the level of an OptiNet machine using a separate wire harness. The Opti 1000 control device is removed with other optional computer equipment. The machine's old PC and display are replaced with a new PONSSE Opti 7 PC. The UPS unit is converted to act as a 12 V input circuit for the new PC, after which the update is continued by installing the power cable set and the new PC in the cockpit. In addition, a new wire harness is installed for the harvester head's valves.

The upgrade package's optional equipment includes the Caliper3 update.

- + After the installation, it is possible to use the latest harvester and forest company software.
- + With the PONSSE Opti 7 upgrade package, the machine's measuring system can be updated to match modern technology.
- + Get the latest advanced technology for forest machines.

### PONSSE OPTI 7 UPGRADE PACKAGE FOR OPTINET/SILVEROPTI & 1000 MACHINES

To replace OPTINET	0083834
To replace SilverOPTI & 1000	0083833

## PONSSE OPTI 7 UPGRADE PACKAGE FOR TP2000 HARVESTERS



PONSSE harvesters made in 2000–2003 that use the Opti 2000 measuring device can be updated with the latest PONSSE Opti 7 upgrade package. After the upgrade, you get the most advanced measuring device technology in forest machines, and can use the latest harvester and forest company software.

The upgrade package meets the requirements set in the new measurement legislation amendment to be enforced in the future.

In addition, optional equipment for the upgrade package includes the PONSSE Comfort control handle and Caliper3 updates.

### AC network installation:

DC nodes are replaced by AC modules. The Arcnet network is updated to work with the Opti 7 PC. In addition, you get the latest PONSSE Opti 4G software version.

### PONSSE OPTI 7 UPGRADE PACKAGE FOR TP2000 HARVESTERS

AC network installation	0083835
-------------------------	---------

- + With the PONSSE Opti 7 upgrade package, the machine's measuring system can be updated to match modern technology.
- + After the installation, it is possible to use the latest harvester and forest company software.
- + Get the latest advanced technology for forest machines.

## PONSSE OPTI 7 UPGRADE PACKAGE FOR TP2004 HARVESTERS



PONSSE harvesters made in 2004 or later can be updated with the PONSSE Opti 7 upgrade package. After the upgrade, you get the most advanced measuring device technology in forest machines, and can use the latest harvester and forest company software.

With the upgrade package, the PONSSE forest machine's Opti+, Opti 5 and Opti 5+ PC can be updated to the latest version. The advantages of the PONSSE Opti 7 PC over older computers include improved reliability and a touchscreen, which guarantees easy and smooth use. The PC is integrated inside the display unit, making the device simple and compact. With the update, you get the latest PONSSE Opti 4G software version.

Note: The crane and harvester head module may also need to be changed in forest machines equipped with the PONSSE Opti+ measuring device. These modules are not included in the price of the upgrade package.

Optional equipment for the upgrade package includes the PONSSE Comfort control handle and Caliper3 updates.

- + With the PONSSE Opti 7 upgrade package, the machine's measuring system can be updated to match modern technology.
- + After the installation, it is possible to use the latest harvester and forest company software.
- + Get the latest advanced technology for forest machines.

### PONSSE OPTI 7 UPGRADE PACKAGE FOR TP2004 HARVESTERS

To replace Opti+	0083838
To replace Opti5	0083839





## OPTI 8 UPGRADE PACKAGE



With the upgrade package, the Opti 6 or Opti 7 computer of PONSSE machines can be upgraded to the latest Opti 8 computer. PONSSE Opti 8 is a state-of-the-art touchscreen computer designed for PONSSE forest machines. The new Opti 8 computer offers more power and memory than the previous version, experienced by users in faster and smoother operations. The storage capacity of the hard disk has been doubled to ensure the operation of future applications.

### OPTI 8 UPGRADE PACKAGE

Scorpion	0085146
MS2015 Fixed cabin	0085147

## CALIPER3 CALIPERS



- + Sturdy structure with magnetic measuring
- + Lightweight and balanced
- + User-friendly and easy-to-learn user interface

Ensure your machine's measuring accuracy by using the latest Caliper3 calipers. Caliper3 calipers are known for their durable structure, accuracy and maintenance-free measuring principle.

The packages are suitable for installation directly with a new Opti 7 measuring device or in place of Caliper+ calipers.

The packages include calipers, cables for both installation options and brackets.

### CALIPER3 CALIPERS

Caliber3 L = 65 cm	0070529
Caliber3 L = 50 cm	0070511

The estimated installation time is 1 hour.

The installation is carried out by a service shop authorised by Ponsse.

## OPTI 7 BASIC PACKAGE FOR ALL BASE MACHINES



- + Effective and versatile measuring and control system for all base machines.
- + Includes all necessary features for effective and reliable harvesting.

Ponsse has designed the Opti 7 basic package for all types of base machines. The package consists of a display and seat module, as well as the Opti 7 measuring device. Opti 7 is a simple and versatile measuring and control system for PONSSE harvester head retrofits.

Opti 7 includes all the features required for effective and productive harvesting when automatic bucking, wireless data transfer or map systems are required. Opti 7 meets all the modern harvesting requirements of forest companies. Harvester head sensor and actuators are connected to the harvester head module. The module controls the harvester head and reads harvester head inputs. The module, sensors and actuators are delivered in a package delivered with the harvester head.

Note: Calipers are not included in the Opti 7 basic package.

### OPTI 7 BASIC PACKAGE FOR ALL BASE MACHINES

Opti 7 measuring device	AM08643
-------------------------	---------

Track-based excavators and most harvester-based base machines. Ask if Opti 7 can be installed in your machine!

Opti 7 is fully compatible with all PONSSE harvester heads.

The estimated installation time is 16 hours.

The installation is carried out by a Ponsse-authorized service shop.

## OPTI COMPUTERS ARE ALSO AVAILABLE AS REMANUFACTURED PARTS.

OPTI 7, WIN10, 0083276VR  
OPTI 8, WIN10, 0076765VR



## PONSSE COMFORT CONTROL HANDLE UPDATE



- + Improved ergonomics and adjustability of controls
- + Significantly reduced strain on your hands, neck and shoulders
- + Clearly readable lever buttons

The PONSSE Comfort control handle update includes new handles, armrests, seat cables and seat module, and a software upgrade at least to version 4.715. The update is available for PONSSE harvesters as ball or mini handles. In PONSSE forwarders, the control handle update is implemented with mini handles.

### Properly shaped handles and a good working posture

The shape, position and movement of the new ball and mini handles have been optimised to support the natural position and movements of your hands. In addition, the ball handles contain a cushion with side support which can be changed according to the operator's hand size. It offers a firm grip and prevents the hand from sliding off the handle. The hand rests in a natural position without needing to squeeze the handle. All three cushions are included in the update package.

In PONSSE Comfort, armrest adjustments are now easier and more effortless. The length and height of the armrest can be adjusted independently.

### Feel and durability of switches

The control handles and armrests include new switch buttons. The buttons have been selected on the terms of feel and durability.

### PONSSE COMFORT CONTROL HANDLE UPDATE

PONSSE Comfort control handle update is available from TP2004 model series onwards.

(ball handles)/harvesters	0070877
(mini handles)/harvesters	0070970
(mini handles)/forwarders	0072762
(Gessmann)/ harvesters	0075018

The estimated installation time is 8 hours.

The installation is carried out by a Ponsse-authorized service shop.

## 4G MODEM PACKAGE



### PROPERTIES OF THE SIERRA AIRLINK RV50 MODEM:

- 4G ready
- Diversity in the antenna system -> better connections
- Water and dust proofing in accordance with the IP64 standard
- Impact, vibration, temperature and water proofing in accordance with the MIL-STD-810G standard
- Also supports Metsä Group's data transfers

### 4G MODEM PACKAGE

0078035

## MATRIX KEYBOARD PARTS FOR OPTIONAL EQUIPMENT



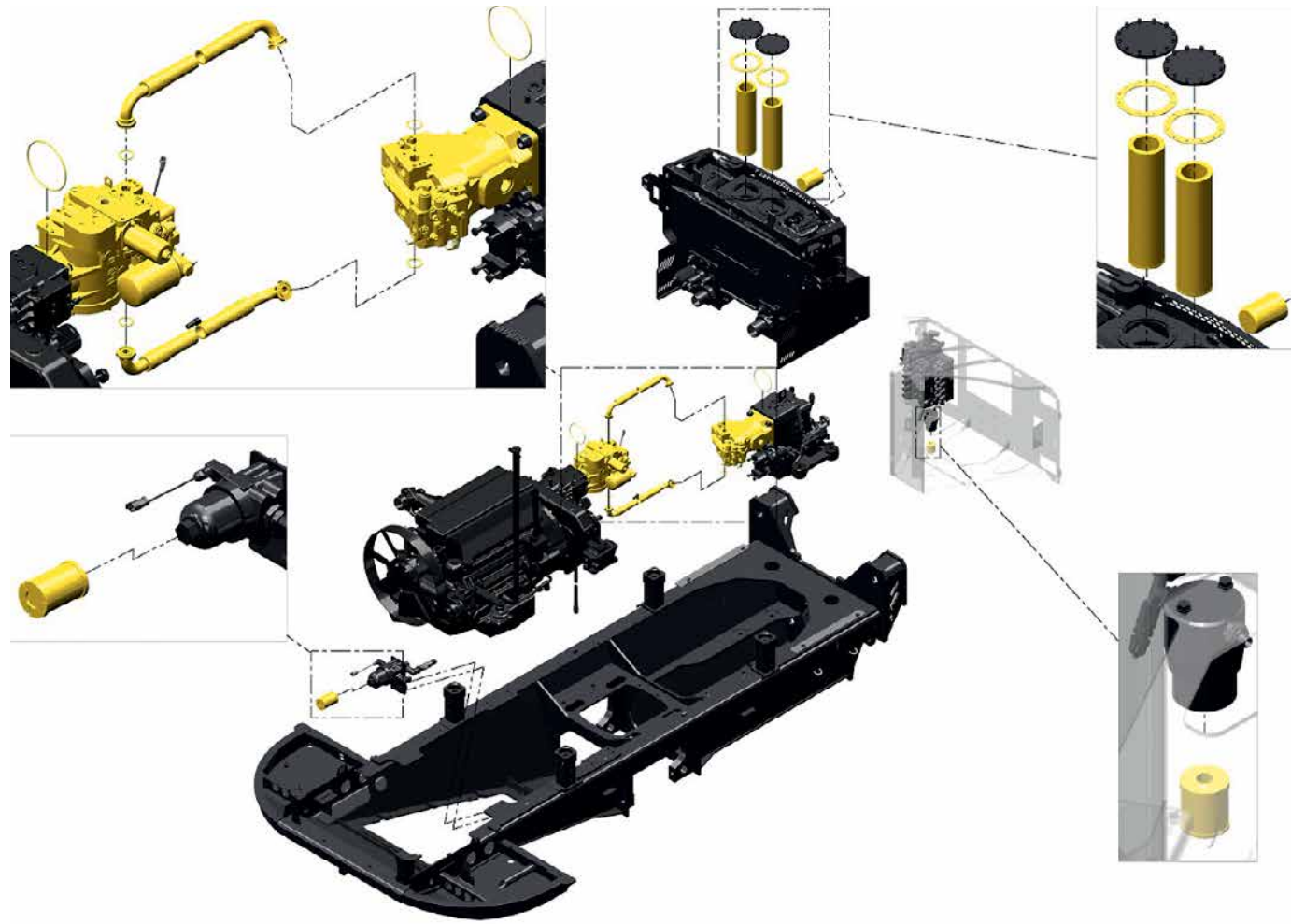
### MATRIX KEYBOARD PARTS FOR OPTIONAL EQUIPMENT

Switch panel parts for optional equipment such as winches or scales. Includes switch panels, wire harnesses and an installation kit for both handles.

0082472



## UPDATED DRIVING HYDRAULICS



With updated packages, you can make your machine's driving hydraulics as good as new. Preventive maintenance in good time prevents any downtime resulting from worn components.

**The packages include:**

- Drive motor
- Drive pump
- Drive pump suction hose and clamps
- Transmission pressure hoses
- Drive motor and pump O-rings
- Hydraulic filters
  - Return
  - Servo (old model series)
  - Cooling circulation
  - Tank breather
  - Working circuit (older Ergo and Beaver machines)
  - Fan circuit filter (MS 2015)

Note: Installation and hydraulic oil are not included in the package.

The parts have a regular six-month spare parts warranty.

- + Driving efficiency as in new machines
- + Improved driving comfort and control
- + Savings in fuel consumption

Main components
Transmission hydraulic pump
Transmission hydraulic pump
Hose assemblies
Hydraulic filters
<b>The estimated installation time</b> is 8 hours. The installation is carried out by a Ponsse-authorized service shop.

### MODEL SERIES 2000 & 2004

Buffalo 8W 030285-030902	0069678
Buffalo 6W 0150003-0150039	
Buffalo Dual 070001-070155	
Buffalo 8W 0320001-0320616	0074927
Buffalo 6W 0310001-0310012	
Buffalo Dual 0340001-0340026	
Buffalo King 6W 0190001-0190040	0080986
Buffalo King 8W 0120001-0120152	
Buffalo King 6W 0350001 »	0081105
Buffalo King 8W 0360001 »	
Bear 8W 0210001-0210021	0080009
Ergo 6W 050001-051136	0070189
Ergo 6W 051137-051546	0077112
Ergo 6W 0390001-0390120	0077113
Ergo 8W 0230001-0230636	0077114
Wisent 8W 080183-080532	0069677
Wisent 6W 090035-090090	
Gazelle 0110001-0110180	
Elk 6W 0130001-0130093	
Elk 8W 0140001-0140384	
Wisent Dual 0100021-0100047	
Wisent 8W 0530001-0530131	0077126
Wisent 6W 0520001-0520005	
Gazelle 0540001-0540052	
Elk 6W 0480001-0480012	
Elk 8W 0490001-0490174	
Beaver 040001-040549	0077128
Beaver 040550-040768	0069679
Beaver 0450001 »	
Elephant 6W 0160001-0160003	0073301
Elephant 8W 0170001-0170135	
Elephant 8W 0420001-0420074	0076562
Elephant King 0440001-0440089	

### MODEL SERIES 2015

Bear A020001 »	0081084*
Beaver A010001 »	0081085
Buffalo 6W A150001 »	0081086
Buffalo 8W A080001 »	
Buffalo Dual 8W A140001 »	
Buffalo King 6W A190001 »	0081087
Buffalo King 8W A120001 »	
Buffalo AF A060001 »	0081088
Cobra A260001 »	0081089
Elephant 8W A180001 »	0081090**
Elephant King 8W A130002 »	
Elephant AF 8W A200001 »	0081095
Elephant King AF 8W A110001 »	
Ergo 6W A050003 »	0081096
Ergo 8W A090002 »	0081097
Ergo AF A220001 »	0081098
Fox A230001 »	0081099
Gazelle 8W A160001 »	0081100
Scorpion A040001 »	0081101*
Scorpion King A010001 »	0081102*
Elk 6W A170001 »	0081103
Elk 8W A070002 »	
Wisent A030003 »	

\*Fan circuit filter 0036673 is in Bear machines A020001-A020026; to be ordered separately for Scorpions A040001-A040038 and Scorpion Kings A010001-A010092.

\*\*Flushing line hose L0130 to be replaced by L865 hose in the following Elephant machines due to the drive motor change: A130001-A130020, A180001-A180012 and A180007. Hose to be ordered separately.



## WEBASTO THERMO PRO INSTALLATION KIT



### WEBASTO THERMO PRO INSTALLATION KIT

This installation kit is needed when a Thermo 90ST heater is replaced with the new Thermo Pro heater. Includes a fuel pump, hose, hose clamps, a heat protector, wire harness adapter and fasteners.

0079554

## ENGINE AIR INTAKE SYSTEM WITH PRE-CLEANERS



### ENGINE AIR INTAKE SYSTEM WITH PRE-CLEANERS

Engine air intake system with pre-cleaners. Includes the pre-cleaners and the required seals and fasteners. Suitable for MS2015 model series machines. Intended for use in conditions with a lot of dust that require increased filtering capacity for the engine air intake.

0079700

## MIDDLE PIVOT FITTING AND PIN SET



### MIDDLE PIVOT FITTING AND PIN SET

Includes all parts needed for the maintenance of a middle pivot. Suitable for A050001», A090001» and A220001» machines among others. Ask for the product number suitable for your machine!

0079980

## BOGIE HUB MAINTENANCE KIT



### BOGIE HUB MAINTENANCE KIT

Maintenance kit for NAF bogie hubs. Includes all parts necessary such as bearings, seals and shim plates. Suitable for NAF2402158 and 0069045 hubs.

0085579

## HOSE REEL CONNECTION + TIGHTENING BLOCK PRE-ASSEMBLED



### HOSE REEL TIGHTENING BLOCK

ORFS connection. C2, C4 & C6

0077967

JIC connection. HN200, C2 & C4

0077966

A pre-assembled connection and tightening block for the hose reel connection is now available for HN200, C2, C4 and C6 cranes.

The assemble is available with a connection for a pipe in accordance with the ORFS or JIC standard. The package also includes O-rings for necessary seal surfaces and block fastening bolts.

Pre-assembly ensures a high level of cleanliness and properly sealed slide surfaces. You also save time in the replacement of parts.

## BULLDOZER BLADE KITS FOR FORWARDERS



A bulldozer blade can be used to move earth, snow or other material. The hydraulically operated bulldozer blade is installed in the machine's front frame, and it is controlled using the forwarder's control handles.

The bulldozer blade also features a flotation function to prevent the ground being damaged when ploughing snow, for example.

Bulldozer blade packages include everything needed in installation: bulldozer blade, cylinders, hoses, bulldozer blade valve and parts for the K170LS valve block.

- + A sturdy bulldozer blade for moving earth, snow, etc.
- + Helps to clear a storage location, for example
- + Can also help to keep the machine in place when working on slopes
- + The flotation function does not damage the ground when ploughing snow, for example

### PONSSE ELK/ WISENT/ GAZELLE

TP2004 0069701

### PONSSE BUFFALO

Buffalo 8w 030141-030902 0069776

Buffalo 6w 0150001-0150039

BuffaloDual 070036-070155

BuffaloKing 8w 0120001-0120152

BuffaloKing 6w 0190001-0190040

### PONSSE BUFFALO

Buffalo 0320001 » 0077359

Buffalo 6w 0310001 »

BuffaloDual 0340001 »

BuffaloKing 8w 0360001 »

BuffaloKing 6w 0350001 »

### PONSSE ELEPHANT/ELEPHANTKING

0420001 » 0069777

0440001 »

### ELEPHANT

Elephant 0160001 » 0077263

Elephant 0170001 »

### FORWARDERS OF MODEL SERIES 2015

Buffalo 8W A080034-A080628 0077181

Buffalo Dual A140003-A140017

Buffalo King A120015-A120154

Elephant A180001-A180081

Elephant King A130002-A130137

Elk 6W A170001 »

Elk 8W A070002-A070172

Gazelle A160001-A160026

Wisent 8W A030003-A030159

Buffalo 8W A080629 » 0080103

Buffalo Dual 8W A0140018 »

Buffalo King 8W A120155 »

Elephant 8W A180082 »

Elephant King 8W A130138 »

Elk 8W A070173 »

Gazelle 8W A160027 »

Wisent 8W A030160 »

### Main components

Bulldozer blade

Cylinder

Load lowering valve

Bulldozer blade components for valve block

The estimated installation time is 8 hours. The installation is carried out by a Ponsse-authorized service shop.



## BURGER 1.6 AND 2.0 CLAM BUNK PACKAGE FOR PONSSE MACHINES



Burger clam bunks used by Ponsse can be retrofitted, for example, in the following PONSSE forwarders: Elk, Buffalo, Buffalo King and Elephant.

It is easy to move long parts of stems when the clam bunk is a fixed part of the forwarder. The clam bunk is also well suited for moving pillars, and different assortments can be moved in the order best suited to the conditions.

The finished details and high-quality materials of the clam bunk ensure that it can be deployed without using any additional devices or a maintenance hall, and the installation will not take up the contractor's working hours. The clam bunk can be easily lifted using the forest machine's own crane and connected to the hydraulic system using quick couplings.

- + The machine can use both the tree length and the cut-to-length method.
- + A well-functioning package when combined with a PONSSE crane.
- + Easy to move whole stems.
- + Reliable German quality.

### BURGER 1.6 AND 2.0 CLAM BUNK PACKAGE FOR PONSSE MACHINES

Burger 1.6 m <sup>2</sup> package (Elk & Buffalo)	0068080
Burger 1.6 m <sup>2</sup> package (Elk & Buffalo model series 2015)	0077173
Burger 2.0 m <sup>2</sup> package (Buffalo King & Elephant)	0068081

#### Main components

Clam bunk
Bracket
Cable sets
Hoses
Fasteners
Hydraulic connections
Additional keyboards

**The estimated installation time** is 8 hours.  
The installation is carried out by a Ponsse-authorized service shop.

## PONSSE SORTING BUNKS



PONSSE sorting bunks are available as installation kits.

By using sorting bunks, the operator can sort different assortments into different parts of the load space. This makes unloading quicker and improves the forwarder efficiency.

Sorting bunks are quick and easy to install. The first installation takes roughly 15 minutes. Once the bunks have been installed, their position can be changed by using the grapple. The operator does not need to exit the cabin.

### PONSSE SORTING BUNKS

The item number includes 2 turning bunk units	
For normal plate bunks	0075700
For pipe bunks, Ø 90mm	0075701
The variable load space bunks	0075702

## BASE AND VERTICAL PILLAR PACKAGE FOR FORWARDERS



### BASE AND VERTICAL PILLAR PACKAGE FOR FORWARDERS

Main components	
Base/vertical pillar K70	0074097
Base/vertical pillar K90/ K100/ K90Dual	0074104
Base/vertical pillar K101/K111+AC 2.0	0085015
Base/vertical pillar K121+AC 2.0	0082591

**The estimated installation time** is 8 hours.

## PONSSE LOAD OPTIMIZER LOADER SCALE



### PONSSE LOAD OPTIMIZER LOADER SCALE

PONSSE Load Optimizer loader scale for K90M+ and K100M+ loaders with Active Crane 2.0	0082464
---	---------

## DOOR ASSEMBLY FOR 2015 MODEL SERIES CABINS, 0076559B

Door assemblies are put together with doors from the Budget product range when required. Ask your spare parts salesperson about our Budget parts!





## MEASURING WHEEL PACKAGES

- + Measuring wheel packages for PONSSE harvester heads.
- + Complete replacement part – minimises downtime.
- + Quick and easy to install.
- + The replaced measuring package can be used as spare parts.

Ready-assembled measuring wheel packages are now available for PONSSE harvester heads. These competitively priced packages help you to get your machines back to productive harvesting.

Because the measuring wheel package is already assembled, all parts are installed in place at low cost compared with individual parts purchased separately. Furthermore, the measuring wheel packages are easy and quick to install. If a measuring wheel package breaks, all parts should be replaced simultaneously. Thus, the purchase of a complete package saves time and money.



MEASURING WHEEL PACKAGE H73E	
Maritime pine measuring wheel	00663731
Main components	
Length measuring device frame, 1 pc	P47358
Measuring wheel, 1 pc	230433
Pulse sensor, 1 pc	0068321
Spline shaft, 1 pc	P17267
Pulse wheel, 1 pc	P11921



MEASURING WHEEL PACKAGE H73E	
Three-line assembled measuring wheel	0066373
Main components	
Length measuring device frame, 1 pc	P47358
Measuring wheel, 1 pc	P18936
Pulse sensor, 1 pc	0068321
Spline shaft, 1 pc	P17267
Pulse wheel, 1 pc	P11921



MEASURING WHEEL PACKAGE H73	
Conventional 32-tooth measuring wheel	0066376
Main components	
Measuring device frame, 1 pc	P17413
Measuring wheel, 1 pc	230360
Pulse sensor, 1 pc	0062838



MEASURING WHEEL PACKAGE H60	
Three-line assembled measuring wheel	0066378
Main components	
Length measuring device frame, 1 pc	P46255
Measuring wheel, 1 pc	P18936
Pulse wheel, 1 pc	P11921
Pulse sensor	0068321



MEASURING WHEEL PACKAGE H6 / H7 / H8	
Measuring wheel package with standard measuring wheel	0084899



MEASURING WHEEL PACKAGE H5	
Measuring wheel package with standard measuring wheel	0084939



MEASURING WHEEL PACKAGE H53	
Two-line maritime pine measuring wheel	00663801
Main components	
Measuring device frame, 1 pc	P15840
Measuring wheel, 1 pc	P16297
Pulse sensor, 1 pc	0062838



MEASURING WHEEL PACKAGE H6 / H7 / H8	
Measuring wheel package with 2 long spiked measuring wheels	0084899



MEASURING WHEEL PACKAGE H5	
Wide measuring wheel, suitable for multi-stemming	0084938

The estimated installation time is 1-4 hours. The installation is carried out by a service shop authorised by Ponsse.



## HARVESTER HEAD SLIDE BEARING SETS



- + Reliable operation
- + Accuracy
- + Reliability

Slide bearing packages are available for all PONSSE harvester heads for replacing old and worn slide bearings. As a result, any clearance in the harvester head can be removed and reliability improved.

The packages include all slide bearings for harvester heads: delimiting knives, feed roller frame, length measuring device frame, slide bearings for the tilt frame and reaction bar, making the harvester head as good as new. The VVB series slide bearings used in Ponsse's slide bearing packages endure heavy stress and high impact loads and have good lubrication characteristics thanks to lubricant holes.

## TAPER PINS



### TAPER PINS FOR H7 & H7EUCA GRAPPLES

Taper pins for roller cylinders and reaction bars. Suitable for serial numbers: 0077528  
760001 »  
770001 »  
780001 »  
810001 »  
Includes taper pins, bushings, fastening bolts, stop screws and grease nipples.

FITTING SETS		
Harvester head	Serial numbers	No.
H5	480001 »	0072717
H6	670001-671444	0070214
H6	671445 »	0081289 ***
H7 & H7 Euca**	770001-770685 760001-761752 78XXXX	0067218
H7	761753 »	0083649 ****
H7HD*	760343-761981	0080113
H7HD*	761982 »	0083381
H8	830001-830101	0067219
H8	840321 »	0074963
H8HD	D010001 »	0080078
H10	850001 »	0080083

\* H7 with a reinforced saw box and a slewing ring for use with excavators. Does not include bushings for CT30 (3 × 0058405)

\*\* H7 Euca with a measuring wheel

\*\*\* 0081289 is identical to 0070214, but it does not include bushings for CT30 (3 × 0058405)

\*\*\* 0083649 is identical to 0067218, but it does not include bushings for CT30 (3 × 0058405)

\*\*\*\* Also suitable for 840001-840320, but bushings for CT30 (3 × 0058405) must be ordered separately

## CT+ CHAIN TENSIONER



### CT+ CHAIN TENSIONER

Pre-assembled CT+ chain tensioner 0080296

## RETROFIT COLOUR MARKING EQUIPMENT



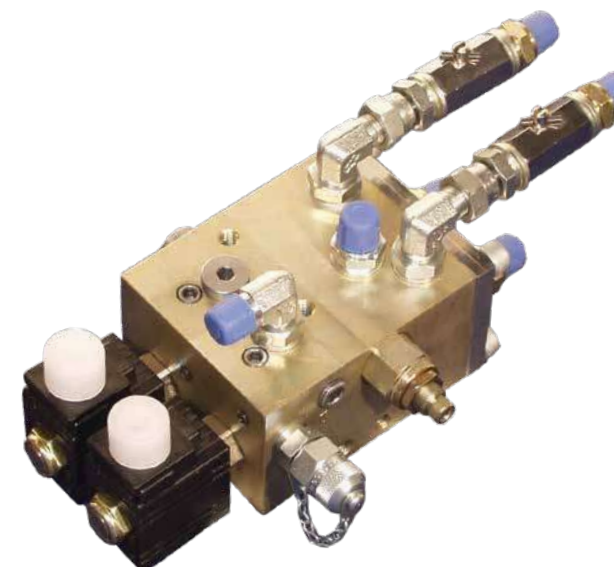
- + Available for all PONSSE harvester head models.
- + A handy retrofit package.

Retrofit colour marking equipment packages are available for PONSSE harvester heads.

The colour marking packages include all the parts required: hoses, colour marking tanks for the tilt frame, a colour marking knife with nozzles and the colour marking block, which needs to be ordered with a separate number.

The installation packages are designed for harvester heads that do not include a factory-installed colour marking system. Harvester heads can be quickly set up to be ready for colour marking using new package solutions.

## COLOUR MARKING PACKAGES



- + Reliable and simple structure.
- + 100% marking reliability – quickly and accurately.
- + Complete replacement part – minimises downtime.

### RETROFIT COLOUR MARKING EQUIPMENT

<b>H5</b>	480001 »	0078986
<b>H6</b>	BSP 670001–670441	0068738
	BSP 670442 »	0077657
<b>H7</b>	770001 »	0068462
	BSP 760001 »	0077236
	ORFS 760001 »	0077249
<b>H8</b>	830001 »	0068462
	BSP 840001 »	0077236
	ORFS 840001 »	0077249
<b>+ COLOUR MARKING BLOCK FOR ALL HARVESTER HEADS</b>		
	BSP H5	0078985
	BSP H6, H7, H8	0067785
	ORFS H6, H7, H8	0077248
<b>The estimated installation time</b> is 8 hours. The installation is carried out by a Ponsse-authorized service shop.		

Ready-assembled hydraulic colour marking packages are now available for PONSSE harvester heads. The purpose of the packages is to operate colour marking in harvester heads as quickly as possible. Old and already-installed blocks dry up easily when unused, in which case the installation of a new block is a good and reliable solution.

The diameter of the colour pistons is wider than that of Ponsse's competitors, so bleeding is easy, and timber can be marked quickly and accurately. The check valves in the nozzles stop the colour from leaking from the colour hoses, enabling 100% marking readiness, immediately in the morning, starting from the very first log.

**NOTE: To be ordered separately with the complete package.**

### COLOUR MARKING PACKAGE

BSP H5	0078985
BSP H53, H60, H73, H5, H6, H7, H8	0067785
ORFS H6, H7, H8	0077248

#### Main components

Valve block, 1 pc
Piston, 2 pcs
Check valve, 4 pcs
Check valve, 2 pcs
Reel, 2 pcs

**The estimated installation time** is 1-4 hours.  
The installation is carried out by a service shop or contractor authorised by Ponsse.



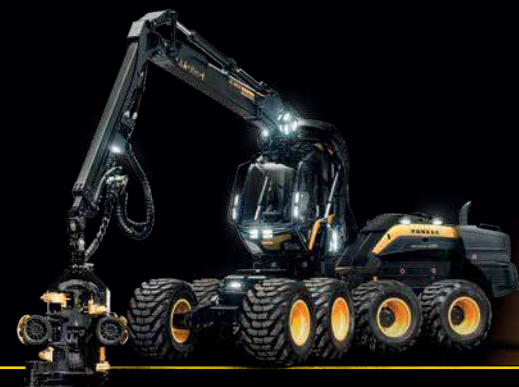
## HARVESTER OF TOMORROW

The new PONSSE Scorpion was warmly welcomed by the industry. Their demand exceeds our manufacturing capacity. This is a sure sign that, with our customers, we have designed a machine that meets all the needs of modern harvesting.

The operator has been further emphasised in the design of the PONSSE Scorpion. Their well-being is a prerequisite for productivity. So we focused on designing as good a workplace as possible.

### NEW PONSSE FUTURE CABIN

The best features are the same as before, only further improved. Good visibility in both daylight and low light, high stability in difficult conditions, and excellent ergonomics make the Scorpion a favourite among operators. Increased space, high-quality materials and a stylish design raise the comfort of the machine's cabin to an entirely new level. Once the door is closed to the outside world, all is quiet, elegant and in the right place.



new  
**SCORPION**



# **FOCUS ON EFFECTIVE AND PRODUCTIVE HARVESTING**



**ACTIVE  
CARE**



## **PONSSE ACTIVE CARE SERVICE AGREEMENTS**

Even the best forest machine in the world needs service to operate at peak efficiency from one logging site to the next. With a PONSSE Active Care service agreement customised for your operating environment and business operations, you can outsource the service of your forest machine to Ponsse.



**PONSSE**

**A logger's best friend**

**Ponsse Plc**

Ponssentie 22

FI-74200 Vieremä, Finland

Tel. +358 20 768 800

Fax +358 20 768 8690

[www.ponsse.com](http://www.ponsse.com)